

**Salmonella enterica subsp. enterica, Strain S5564 (Seroovar Typhimurium)**
**Catalog No. NR-22070**

**Product Description:** *Salmonella enterica* (*S. enterica*) subsp. *enterica*, strain S5564 was isolated in 2000 from cattle feces in Washington State, USA. *S. enterica* subsp. *enterica*, strain S5564 is a multi-drug resistant strain that is reported to be resistant to ampicillin, kanamycin, streptomycin, tetracycline and triple-sulfa (a combination of sulfadiazine, sulfamethazine, and sulfamerazine) but is sensitive to ceftazidime.

**Lot<sup>1</sup>: 61662355**
**Manufacturing Date: 12APR2013**

TEST	SPECIFICATIONS	RESULTS
<b>Phenotypic Analysis</b> Cellular morphology Colony morphologies <sup>2,3</sup> (Figure 1)  Analytical profile index (API <sup>®</sup> 20 E) <sup>4</sup>	Gram-negative rod Report results  Consistent with <i>Salmonella</i> spp.	Gram-negative rod Colony Type 1: Circular, convex, entire, smooth and gray Colony Type 2: Undulate, flat, rough and gray Consistent with <i>Salmonella</i> spp.
<b>Genotypic Analysis</b> Sequencing of 16S ribosomal RNA gene (~ 1490 base pairs) Riboprinter <sup>®</sup> Microbial Characterization System	Consistent with <i>S. enterica</i>  Consistent with <i>S. enterica</i>	Consistent with <i>S. enterica</i> subsp. <i>enterica</i> Consistent with <i>S. enterica</i> subsp. <i>enterica</i> serovar Typhimurium
<b>Serogroup Analysis</b>	Report results	Serogroup B <sup>5</sup>
<b>Viability (post-freeze)<sup>2</sup></b>	Growth	Growth

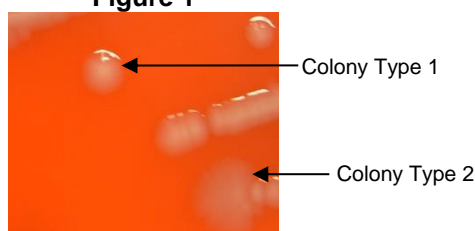
<sup>1</sup>NR-22070 was produced by inoculation of the deposited material into Tryptic Soy broth and grown 24 hours in an aerobic atmosphere at 37°C. Broth inoculum was added to kolles which was grown 24 hours at 37°C and aerobic atmosphere to produce this lot. Purity of this lot was accessed for 7 days under propagation conditions.

<sup>2</sup>24 hours at 37°C and aerobic atmosphere on Tryptic Soy agar with 5% defibrinated sheep blood

<sup>3</sup>Two colony types were observed. Plating of the individual colony types showed that they did not revert back to the mixed colony type. The 16S ribosomal RNA gene of each colony type was sequenced and found to be consistent with the other colony type and *S. enterica* subsp. *enterica*.

<sup>4</sup>Additional serological tests are required to determine *Salmonella* species using API<sup>®</sup> 20 E.

<sup>5</sup>Serogroup B contains serotype Typhimurium in addition to other serotypes.

**Figure 1**

**Date: 07 OCT 2013**
**Signature:**
**Title:** Technical Manager, BEI Authentication or designee

ATCC<sup>®</sup>, on behalf of BEI Resources, hereby represents and warrants that the material provided under this certificate has been subjected to the tests and procedures specified and that the results described, along with any other data provided in this certificate, are true and accurate to the best of ATCC<sup>®</sup>'s knowledge.

ATCC<sup>®</sup> is a trademark of the American Type Culture Collection.

You are authorized to use this product for research use only. It is not intended for human use.


**BEI Resources**
[www.beiresources.org](http://www.beiresources.org)

E-mail: [contact@beiresources.org](mailto:contact@beiresources.org)

Tel: 800-359-7370

Fax: 703-365-2898