

# Salmonella enterica subsp. enterica, Strain S9328 (Seroovar Typhimurium)

Catalog No. NR-22069

**Product Description:** *Salmonella enterica* (*S. enterica*) subsp. *enterica*, strain S9328 was isolated in 2004 from human feces in Washington State, USA. *S. enterica* subsp. *enterica*, strain S9328 is a multi-drug resistant strain that is reported to be resistant to ampicillin, kanamycin, streptomycin, tetracycline, triple-sulfa (a combination of sulfadiazine, sulfamethazine, and sulfamerazine) and ceftazidime. Strain S9328 is reported to contain an approximately 90 kilobase pair *bla*<sub>CMY-2</sub> plasmid.

Lot<sup>1</sup>: 61662356

Manufacturing Date: 17APR2013

TEST	SPECIFICATIONS	RESULTS
<b>Phenotypic Analysis</b> Cellular morphology Colony morphology <sup>2</sup>  Analytical profile index (API <sup>®</sup> 20 E) <sup>3</sup>	Gram-negative rod Report results  Consistent with <i>Salmonella</i> spp.	Gram-negative rod Circular, convex, entire, smooth and gray (Figure 1) Consistent with <i>Salmonella</i> spp.
<b>Genotypic Analysis</b> Sequencing of 16S ribosomal RNA gene (~ 960 base pairs) Riboprinter <sup>®</sup> Microbial Characterization System	Consistent with <i>S. enterica</i> Consistent with <i>S. enterica</i>	Consistent with <i>S. enterica</i> subsp. <i>enterica</i> Consistent with <i>S. enterica</i> subsp. <i>enterica</i> serovar Typhimurium
<b>Serogroup Analysis</b>	Report results	Serogroup B <sup>4</sup>
<b>Viability (post-freeze)<sup>2</sup></b>	Growth	Growth

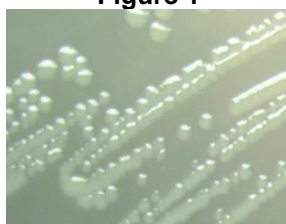
<sup>1</sup>NR-22069 was produced by inoculation of the deposited material into Nutrient broth and grown 24 hours in an aerobic atmosphere at 37°C. Broth inoculum was added to kolles which was grown 24 hours at 37°C and aerobic atmosphere to produce this lot. Purity of this lot was accessed for 7 days under propagation conditions.

<sup>2</sup>24 hours at 37°C and aerobic atmosphere on Nutrient agar

<sup>3</sup>Additional serological tests are required to determine *Salmonella* species using API<sup>®</sup> 20 E.

<sup>4</sup>Serogroup B contains serotype Typhimurium in addition to other serotypes.

Figure 1



Date: 07 OCT 2013

Signature:

Title:

Technical Manager, BEI Authentication or designee

ATCC<sup>®</sup>, on behalf of BEI Resources, hereby represents and warrants that the material provided under this certificate has been subjected to the tests and procedures specified and that the results described, along with any other data provided in this certificate, are true and accurate to the best of ATCC<sup>®</sup>'s knowledge.

ATCC<sup>®</sup> is a trademark of the American Type Culture Collection.

You are authorized to use this product for research use only. It is not intended for human use.



BEI Resources

[www.beiresources.org](http://www.beiresources.org)

E-mail: [contact@beiresources.org](mailto:contact@beiresources.org)

Tel: 800-359-7370

Fax: 703-365-2898