

***Biomphalaria glabrata*, Actin Gene Forward Primer**

**Catalog No. NR-41333**

This reagent is the tangible property of the U.S. Government.

**Product Description:** NR-41333 contains a twenty nucleotide forward primer designed to amplify the actin gene from *Biomphalaria glabrata* (*B. glabrata*) when paired with the actin reverse primer (NR-41369). The sequence of the actin forward 20-mer is 5'-GCTCCCAGGGCCGTTTTCCC-3'.

**Lot<sup>1</sup>: 61433126**

**Manufacturing Date: 17MAY2012**

TEST	SPECIFICATIONS	RESULTS
<b>PCR Assay of Extracted Nucleic Acid<sup>2,3</sup></b> <i>Biomphalaria glabrata</i> <i>Schistosoma mansoni</i>	~ 235 base pair amplicon No amplicons	~ 235 base pair amplicon (Figure 1) No amplicons
<b>Primer Characteristics<sup>1</sup></b> Molecular weight Primer melting temperature (Tm) GC content Primer concentration Moles of primer Micrograms of primer	Report results Report results Report results Report results Report results Report results	6021 g/mol 68.6°C 70.0% 100 µM 3.0 nmoles per vial 18.1 µg per vial
<b>Gene Stability by Quantitative Real-Time PCR</b>	Report results	No statistical significant difference in threshold cycle (Ct) <sup>4,5</sup>

<sup>1</sup>NR-41333 lot: 61433126 was manufactured by Eurofins MWG Operon. Primer characteristics were determined by the manufacturer. The bulk material was thawed and aliquoted at ATCC®.

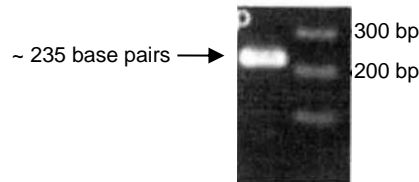
<sup>2</sup>PCR completed by the Biomedical Research Institute prior to vialing.

<sup>3</sup>Position 149 to 381 of GenBank: U53348

<sup>4</sup>20 individual snails were utilized for RT-PCR amplification

<sup>5</sup>ANOVA test (P value = 0.01)

**Figure 1: PCR Amplification of *B. glabrata* Actin Gene using NR-41333 and NR-41369**



**Date:** 16 SEP 2013

**Signature**

**Title:**

Technical Manager, BEI Authentication or designee

ATCC®, on behalf of BEI Resources, hereby represents and warrants that the material provided under this certificate has been subjected by the contributor and manufacturer to the tests and procedures specified and that the results described, along with any other data provided in this certificate, are true and accurate to the best of ATCC®'s knowledge.

ATCC® is a trademark of the American Type Culture Collection.

You are authorized to use this product for research use only. It is not intended for human use.

