

**G Protein with C-Terminal Histidine Tag from Respiratory Syncytial Virus, B1, Recombinant from Baculovirus**

**Catalog No. NR-31098**

This reagent is the tangible property of the U.S. Government.

**Product Description:** A recombinant form of the secreted isoform of the G glycoprotein from respiratory syncytial virus, B1 containing a C-terminal histidine tag was produced by baculovirus infection of *Trichoplusia ni* insect larvae and purified by standard chromatographic methods.

**Lot: 61743199**

**Manufacturing Date: 20JUN2013**

TEST	SPECIFICATIONS	RESULTS
<b>SDS-PAGE (Coomassie Blue Densitometry)<sup>1</sup></b>	RSV bands account for > 85% of total density	RSV bands account for > 85% of total density (Figure 1)
<b>Concentration by Bicinchoninic Acid Protein Assay</b>	Report results	0.46 mg per mL
<b>Final Product</b> Quantity per vial	0.1 mg (± 10%) per vial	0.1 mg (± 10%) per vial
<b>Western Blot</b> Anti-RSV monoclonal antibody <sup>2</sup> Anti-histidine monoclonal antibody <sup>3</sup>	Report results Report results	Reactive with G protein (Figure 2) Reactive with G protein (Figure 3)
<b>Sandwich ELISA<sup>4</sup></b>	Activity observed	Activity observed (Figure 4)
<b>Filtration</b>	0.22 µm filtered	0.22 µm filtered
<b>Bioburden</b>	Report results	< 1 colony-forming unit per mL
<b>Endotoxin Content (Limulus Amebocyte Lysate)</b>	Report results	0.11 EU per mL

<sup>1</sup>NR-31098 has a theoretical molecular weight of 26600 Da. Its high proportion of N- and O-linked glycoforms accounts for the heterogeneous species migrating at higher molecular weights.

<sup>2</sup>Abcam ab94966

<sup>3</sup>Novagen<sup>®</sup> 70796-3 (IgG<sub>1</sub>)

<sup>4</sup>Capture antibody: Mouse Monoclonal [RSV133] to Respiratory Syncytial Virus G Glycoprotein, which recognizes both A and B subgroups (Abcam ab94966) at 2.5 µg per well (100 µL). Detection antibody: Goat Hnti-6-His Antibody HRP Conjugated (Bethyl Laboratories A190-113P) at a dilution of 1:10000.

**Date:** 06 NOV 2013

**Signature:** 

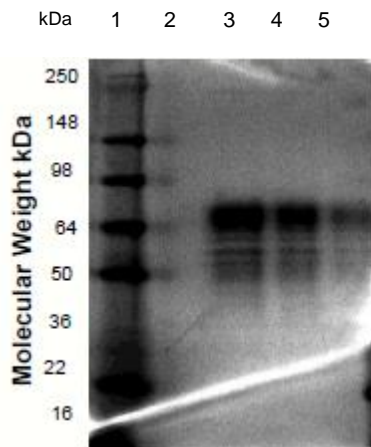
**Title:** Technical Manager, BEI Authentication or designee

ATCC<sup>®</sup>, on behalf of BEI Resources, hereby represents and warrants that the material provided under this certificate has been subjected by the contractor to the tests and procedures specified and that the results described, along with any other data provided in this certificate, are true and accurate to the best of ATCC<sup>®</sup>'s knowledge.

ATCC<sup>®</sup> is a trademark of the American Type Culture Collection. You are authorized to use this product for research use only. It is not intended for human use.

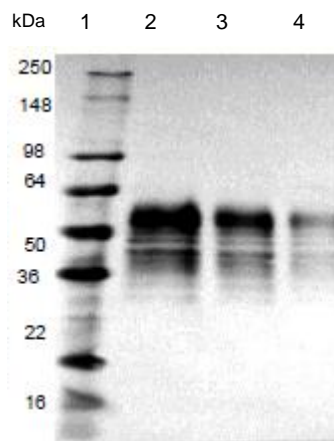


**Figure 1 – SDS-PAGE**



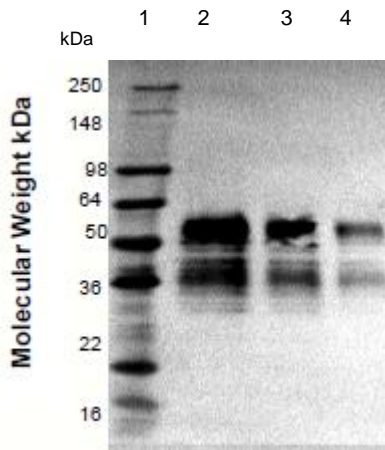
Lane 1: SeeBlue® Plus2 MW marker  
(Invitrogen™ LC5925)  
Lane 2: Blank  
Lane 3: 2.5 µg NR-31098  
Lane 4: 1.25 µg NR-31098  
Lane 5: 0.625 µg NR-31098

**Figure 2 - Western Blot with Monoclonal Anti-RSV**



Lane 1: SeeBlue® Plus2 MW marker  
(Invitrogen™ LC5925)  
Lane 2: 100 ng NR-31098  
Lane 3: 50 ng NR-31098  
Lane 4: 25 ng NR-31098

**Figure 3 - Western Blot with Monoclonal Anti-Histidine Tag**



Lane 1: SeeBlue® Plus2 MW marker  
(Invitrogen™ LC5925)  
Lane 2: 50 ng NR-31098  
Lane 3: 25 ng NR-31098  
Lane 4: 12.5 ng NR-31098

Figure 4 – Sandwich ELISA

