

Salmonella enterica subsp. enterica, Strain SL475 (CVM29188) (Serovar Kentucky)

Catalog No. NR-28791

Product Description: *Salmonella enterica* (*S. enterica*) subsp. *enterica*, strain SL475 (also referred to as CVM29188), was isolated in 2003 from a chicken breast sample purchased through the National Antimicrobial Monitoring System (NARMS) retail meat surveillance program in Georgia, USA. This strain is reported to be multi-drug resistant.

Lot¹: 61662345

Manufacturing Date: 10APR2013

TEST	SPECIFICATIONS	RESULTS
Phenotypic Analysis Cellular morphology Colony morphology ² Analytical profile index (API [®] 20 E) ³	Report results Report results Consistent with <i>Salmonella</i> spp.	Gram-negative rods Circular, convex, entire, smooth and cream (Figure 1) Consistent with <i>Salmonella</i> spp.
Genotypic Analysis Sequencing of 16S ribosomal RNA gene (~ 1460 base pairs) Riboprinter [®] Microbial Characterization System	Consistent with <i>S. enterica</i> Consistent with <i>S. enterica</i>	Consistent with <i>S. enterica</i> subsp. <i>enterica</i> ⁴ Consistent with <i>S. enterica</i> subsp. <i>enterica</i> serovar Kentucky
Serogroup Analysis	Report results	Serogroup C ₂ ⁵
Viability (post-freeze)²	Growth	Growth

¹NR-28791 was produced by inoculation of the deposited material into Nutrient broth and incubated 24 hours at 37°C in an aerobic atmosphere.

Broth inoculum was added to kolles, which were incubated for 24 hours at 37°C in an aerobic atmosphere to produce this lot.

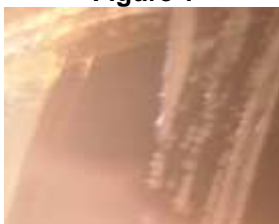
²24 hours at 37°C in an aerobic atmosphere on Nutrient agar

³Additional serological tests are required to determine *Salmonella* species using API[®] 20 E.

⁴≥ 99% identical to GenBank: ABAK02000001 (*S. enterica* subsp. *enterica*, serovar Kentucky, strain CVM29188)

⁵Serovar Kentucky belongs to the C₂-C₃ serogroups, which contain serovar Kentucky in addition to other serovars [Ng, S. P., et al. "Detection and Serogroup Differentiation of *Salmonella* spp. in Food within 30 Hours by Enrichment-Immunoassay with a T6 Monoclonal Antibody Capture Enzyme-Linked Immunosorbent Assay." *Appl. Environ. Microbiol.* 62 (1996): 2794-2302. PubMed: 8779567.].

Figure 1



Date: 06 NOV 2013

Signature: 

Title: Technical Manager, BEI Authentication or designee

ATCC[®], on behalf of BEI Resources, hereby represents and warrants that the material provided under this certificate has been subjected to the tests and procedures specified and that the results described, along with any other data provided in this certificate, are true and accurate to the best of ATCC[®]'s knowledge.

ATCC[®] is a trademark of the American Type Culture Collection.

You are authorized to use this product for research use only. It is not intended for human use.

