

Rothia aeria, Oral Taxon 188, Strain F0474

Catalog No. HM-818

Product Description: *Rothia aeria*, Oral Taxon 188, strain F0474 was isolated in 2008 from saliva of a healthy, 41-year-old female patient in the United States.

Lot^{1,2}: 61881793

Manufacturing Date: 17JUL2013

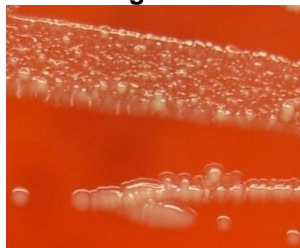
TEST	SPECIFICATIONS	RESULTS
Phenotypic Analysis Cellular morphology Colony morphology ³ Motility (wet mount)	Gram-positive rods Report results Report results	Gram-positive rods Circular, convex, entire, smooth and white (Figure 1) Non-motile
Genotypic Analysis Sequencing of 16S ribosomal RNA gene (~ 1420 base pairs)	≥ 99% identical to GenBank: AJJQ01000002 (<i>Rothia aeria</i> , Oral Taxon 188, strain F0474)	≥ 99% identical to GenBank: AJJQ01000002 (<i>Rothia aeria</i> , Oral Taxon 188, strain F0474)
Viability (post-freeze)³	Growth	Growth

¹Quality control of HMP material is only performed to demonstrate that the material distributed by BEI Resources is identical to the deposited material. It should not be considered a complete characterization of the deposited organism.

²*Rothia aeria*, Oral Taxon 188, strain F0474 was deposited by Jacques Izard, Assistant Member of the Staff, Department of Molecular Genetics, The Forsyth Institute, Boston, Massachusetts, USA. HM-811 was produced by inoculation of the deposited material into Brain Heart Infusion broth and incubated for 24 hours at 37°C in an aerobic atmosphere. Broth inoculum was added to Tryptic Soy agar with 5% defibrinated sheep blood kolles, which were grown 24 hours at 37°C in an aerobic atmosphere to produce this lot. Purity of this lot was assessed for 7 days under propagation conditions.

³24 hours at 37°C in an aerobic atmosphere on Tryptic Soy agar with 5% sheep blood

Figure 1



Date: 18 DEC 2013

Signature:

Title: Technical Manager, BEI Authentication or designee

ATCC®, on behalf of BEI Resources, hereby represents and warrants that the material provided under this certificate has been subjected to the tests and procedures specified and that the results described, along with any other data provided in this certificate, are true and accurate to the best of ATCC®'s knowledge.

ATCC® is a trademark of the American Type Culture Collection.

You are authorized to use this product for research use only. It is not intended for human use.

