

Epsilon Toxin from *Clostridium perfringens* with N-terminal Histidine Tag, Recombinant from *Escherichia coli*

Catalog No. NR-855

This reagent is the tangible property of the U.S. government.

Product Description: NR-855 is a recombinant form of epsilon toxin from *Clostridium perfringens*. The amino acid sequence includes an N-terminal histidine tag (MRGSHHHHHHG), amino acid residues 40 to 324 of the epsilon toxin precursor protein, and five plasmid-encoded amino acids at the C-terminus. A QIAGEN pQE30 vector was used to express the recombinant protein in *Escherichia coli*. The protein was purified by nickel affinity chromatography.

Lot: 5053477

Manufacturing Date: AUG2005

TEST	SPECIFICATIONS	RESULTS
Appearance	Report results	Clear and colorless, no particulates
SDS-PAGE (SYPRO Orange densitometer scan)	Dominant band ~ 33 kDa > 95% pure	Dominant band ~ 33 kDa > 98% pure (see Figure 1)
Sequencing of Epsilon Toxin Gene in Plasmid Construct	Report results	Identical to GenBank M95206 (nucleotides 339 to 1189)
Mass Spectrometry	Report results (expected MW is 33,697 daltons based on amino acid sequence)	32,936 daltons (2.3% less than expected MW)
SELDI-TOF Mass Spectrometry of Trypsin Digest	> 50% of total residues accounted for in peptides of expected mass	> 50% of total residues accounted for in peptides of expected mass
Concentration by Bicinchoninic Acid Protein Assay	Report results	1.0 mg/mL
Functional Activity by Western Blot Analysis Rabbit polyclonal IgG antibody to epsilon toxin peptides (BEI Resources NR-865) ¹	Reactive	Reactive
Sterility	0.22 µm filter sterilized	0.22 µm filter sterilized
Endotoxin Content	Report results	4.83 EU/mg
Absorbance Ratio (OD ₂₈₀ /OD ₂₆₀)	Report results	2.3

¹BEI Resources NR-865 has been shown to be specific for epsilon toxin from *Clostridium perfringens*.

Figure 1

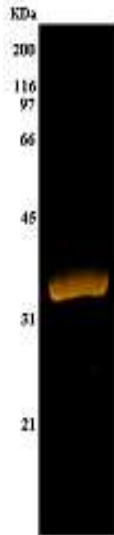
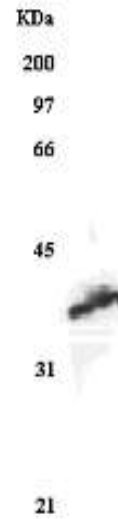


Figure 2



Date: 08 MAR 2007

Signature: Signature on File

Title: Technical Manager, BEI Authentication or designee

ATCC®, on behalf of BEI Resources, hereby represents and warrants that the material provided under this certificate has been subjected by the contractor to the tests and procedures specified and that the results described, along with any other data provided in this certificate, are true and accurate to the best of ATCC®'s knowledge.

ATCC® is a trademark of the American Type Culture Collection.

You are authorized to use this product for research use only. It is not intended for human use.

