

**Bacteroides sp., Strain 2\_1\_16**

**Catalog No. HM-58**

**Product Description:** *Bacteroides* sp., strain 2\_1\_16 was isolated in 2007 from healthy biopsy tissue taken from the descending colon of a 58-year-old female patient undergoing a colonoscopy as part of a colon cancer screen procedure in Calgary, Alberta, Canada.

**Lot<sup>1,2</sup>: 61954298**

**Manufacturing Date: 19AUG2013**

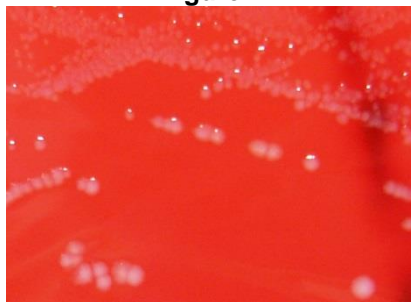
TEST	SPECIFICATIONS	RESULTS
<b>Phenotypic Analysis</b> Cellular morphology Colony morphology <sup>3</sup>  Motility (wet mount)	Gram-negative rods Report results  Report results	Gram-negative rods Circular, low convex, entire, smooth and gray (Figure 1) Non-motile
<b>Genotypic Analysis</b> Sequencing of 16S ribosomal RNA gene (~ 360 base pairs)	≥ 99% identical to GenBank: ACPP01000019 ( <i>Bacteroides</i> sp., strain 2_1_16)	≥ 99% identical to GenBank: ACPP01000019 ( <i>Bacteroides</i> sp., strain 2_1_16)
<b>Viability (post-freeze)<sup>3</sup></b>	Growth	Growth

<sup>1</sup>Quality control of HMP material is only performed to demonstrate that the material distributed by BEI Resources is identical to the deposited material. It should not be considered a complete characterization of the deposited organism.

<sup>2</sup>*Bacteroides* sp., strain 2\_1\_16 was deposited by Professor Emma Allen-Vercoe, Department of Molecular and Cellular Biology, University of Guelph, Guelph, Ontario, Canada. HM-58 was produced by inoculation of the deposited material into Modified Reinforced Clostridial broth and incubated for 47 hours at 37°C in an anaerobic atmosphere (90% N<sub>2</sub>:5% CO<sub>2</sub>:5% H<sub>2</sub>). The material from the initial growth was passaged once in Reinforced Clostridial broth for 76 hours at 37°C in an anaerobic atmosphere to produce this lot. Purity of this lot was assessed for 7 days under propagation conditions.

<sup>3</sup>48 hours at 37°C in an anaerobic atmosphere on Tryptic Soy agar with 5% defibrinated sheep blood

**Figure 1**



**Date:** 18 FEB 2014

**Signature:** 

**Title:** Technical Manager, BEI Authentication or designee

ATCC®, on behalf of BEI Resources, hereby represents and warrants that the material provided under this certificate has been subjected to the tests and procedures specified and that the results described, along with any other data provided in this certificate, are true and accurate to the best of ATCC®'s knowledge.

ATCC® is a trademark of the American Type Culture Collection. You are authorized to use this product for research use only. It is not intended for human use.

