

Aggregatibacter aphrophilus, Oral Taxon 545, Strain F0387

Catalog No. HM-206

Product Description: *Aggregatibacter aphrophilus* (*A. aphrophilus*), Oral Taxon 545, strain F0387 was isolated in 1984 from the subgingival dental plaque, at a healthy site, of a 24-year-old female patient in the United States.

Lot^{1,2}: 62072043

Manufacturing Date: 23OCT2013

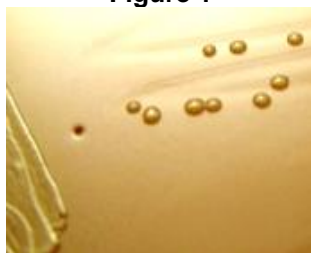
TEST	SPECIFICATIONS	RESULTS
Phenotypic Analysis Cellular morphology Colony morphology ³ Motility (wet mount)	Gram-negative rods Report results Report results	Gram-negative rods Circular, convex, entire, opaque, smooth and cream (Figure 1) Non-motile
Genotypic Analysis Sequencing of 16S ribosomal RNA gene (~ 1480 base pairs)	≥ 99% identical to GenBank: ACZJ01000020 (<i>A. aphrophilus</i> , Oral Taxon 545, strain F0387)	≥ 99% identical to GenBank: ACZJ01000020 (<i>A. aphrophilus</i> , Oral Taxon 545, strain F0387)
Viability (post-freeze)³	Growth	Growth

¹Quality control of HMP material is only performed to demonstrate that the material distributed by BEI Resources is identical to the deposited material. It should not be considered a complete characterization of the deposited organism.

²*A. aphrophilus*, Oral Taxon 545, strain F0387 was deposited by Jacques Izard, Assistant Member of the Staff, Department of Molecular Genetics, The Forsyth Institute, Boston, Massachusetts, USA. HM-206 was produced by inoculation of the deposited material into Haemophilus Test medium and incubated for 23 hours at 37°C in an aerobic atmosphere with 5% CO₂. Broth inoculum was added to Chocolate agar kolles, which were grown 22 hours at 37°C in an aerobic atmosphere with 5% CO₂ to produce this lot. Purity of this lot was assessed for 7 days under propagation conditions.

³23 hours at 37°C in an aerobic atmosphere with 5% CO₂ on Chocolate agar

Figure 1



Date: 18 FEB 2014

Signature:

Title:

Technical Manager, BEI Authentication or designee

ATCC®, on behalf of BEI Resources, hereby represents and warrants that the material provided under this certificate has been subjected to the tests and procedures specified and that the results described, along with any other data provided in this certificate, are true and accurate to the best of ATCC®'s knowledge.

ATCC® is a trademark of the American Type Culture Collection.

You are authorized to use this product for research use only. It is not intended for human use.

