

**Escherichia coli, Strain F11119-41**
**Catalog No. NR-17674**
**Product Description:** *Escherichia coli* (*E. coli*), strain F11119-41, serotype O15:K1:H-, was isolated from the feces of a healthy human; it has been typed as an O16:K1:H- strain.

**Lot<sup>1</sup>: 61859935**
**Manufacturing Date: 19JUL2013**

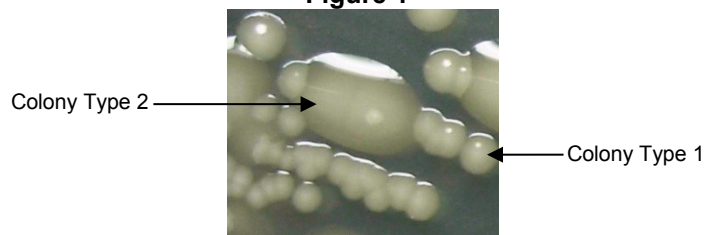
TEST	SPECIFICATIONS	RESULTS
<b>Phenotypic Analysis</b> Cellular morphology Colony morphologies <sup>2,3</sup>  Motility (wet mount) Analytical profile index (API® 20 E)	Gram-negative rods Report results  Report results Consistent with <i>E. coli</i>	Gram-negative rods Colony type 1: Circular, peaked, entire, smooth and cream (Figure 1) Colony type 2: Circular, convex, entire, smooth, mucoid and cream (Figure 1) Non-motile Consistent with <i>E. coli</i>
<b>Genotypic Analysis</b> Sequencing of 16S ribosomal RNA gene (~ 1470 base pairs) Riboprinter® Microbial Characterization System	Consistent with <i>E. coli</i> Consistent with <i>E. coli</i>	Consistent with <i>E. coli</i> <sup>4</sup> Consistent with <i>E. coli</i>
<b>PCR Assay of Extracted DNA</b> PCR amplification of chromosomal borne virulence markers <i>stx1</i> <i>stx2</i>	Report results Report results	Negative Negative
<b>Viability (post-freeze)<sup>2</sup></b>	Growth	Growth

<sup>1</sup>NR-17674 was produced by inoculation of the deposited material into Tryptic Soy broth and grown 24 hours at 37°C in an aerobic atmosphere. Broth inoculum was added to Tryptic Soy agar with 5% defibrinated sheep blood kolles which were grown 24 hours at 37°C in an aerobic atmosphere to produce this lot. Purity of this lot was assessed for 7 days under propagation conditions.

<sup>2</sup>24 hours at 37°C in an aerobic atmosphere on Tryptic Soy agar

<sup>3</sup>Two colony types were observed. Plating of the individual colony types showed that they did not revert to a mixed colony type. The 16S ribosomal RNA gene of each colony type was sequenced and found to be consistent with *E. coli*.

<sup>4</sup>Also consistent with *Shigella* species

**Figure 1**

**Date: 19 MAY 2015**
**Signature:**
**BEI Resources Authentication**

ATCC®, on behalf of BEI Resources, hereby represents and warrants that the material provided under this certificate has been subjected to the tests and procedures specified and that the results described, along with any other data provided in this certificate, are true and accurate to the best of ATCC®'s knowledge.

ATCC® is a trademark of the American Type Culture Collection.

You are authorized to use this product for research use only. It is not intended for human use.

