

Enterococcus faecalis, Strain SF28073

Catalog No. NR-31972

Product Description: *Enterococcus faecalis* (*E. faecalis*), strain SF28073 was isolated in 2003 from a human urine sample obtained in Michigan, USA. It is reported to be resistant to erythromycin, gentamicin and vancomycin.

Lot¹: 61956012

Manufacturing Date: 15AUG2013

TEST	SPECIFICATIONS	RESULTS
Phenotypic Analysis Cellular morphology Colony morphology ² Hemolysis ³ Motility (wet mount) Analytical profile index (API [®] 20 Strep)	Gram-positive cocci Report results Non-hemolytic or α -hemolytic Report results Consistent with <i>E. faecalis</i>	Gram-positive cocci Circular, convex, entire, smooth and cream (Figure 1) Non-hemolytic Non-motile Consistent with <i>E. faecalis</i>
Genotypic Analysis Sequencing of 16S ribosomal RNA gene (~ 1480 base pairs)	Consistent with <i>E. faecalis</i>	Consistent with <i>E. faecalis</i> ⁴
Viability (post-freeze)²	Growth	Growth

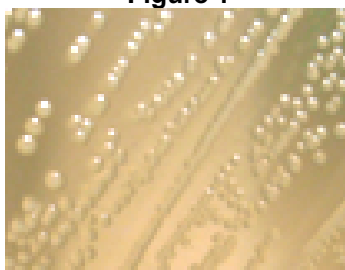
¹*E. faecalis*, strain SF28073 (also referred to as EnGen0243) was deposited by Michael S. Gilmore, Ph.D., Sir William Osler Professor of Ophthalmology, Department of Ophthalmology, Massachusetts Eye and Ear Infirmary, Boston, Massachusetts, USA. NR-31972 was produced by inoculation of the deposited material into Tryptic Soy broth and incubated for 24 hours at 37°C in an aerobic atmosphere. Broth inoculum was added to Brain Heart Infusion agar kolles which were grown 24 hours at 37°C in an aerobic atmosphere to produce this lot. Purity of this lot was assessed for 7 days under propagation conditions.

²24 hours at 37°C in an aerobic atmosphere on Brain Heart Infusion agar

³24 hours at 37°C in an aerobic atmosphere on Tryptic Soy agar with 5% defibrinated sheep blood

⁴≥ 99% identical to GenBank: AJBC01000021 (*E. faecalis*, strain SF28073)

Figure 1



Date: 04 MAR 2014

Signature:

Title: Technical Manager, BEI Authentication or designee

ATCC[®], on behalf of BEI Resources, hereby represents and warrants that the material provided under this certificate has been subjected to the tests and procedures specified and that the results described, along with any other data provided in this certificate, are true and accurate to the best of ATCC[®]'s knowledge.

ATCC[®] is a trademark of the American Type Culture Collection.

You are authorized to use this product for research use only. It is not intended for human use.

