

Staphylococcus aureus, Strain N315

Catalog No. NR-45898

Product Description: *Staphylococcus aureus* (*S. aureus*), strain N315 was isolated in 1982 from a pharyngeal smear of a patient in Japan. *S. aureus*, strain N315 is a methicillin-resistant *S. aureus* (MRSA) strain and is reported to be resistant to clindamycin, erythromycin and spectinomycin.

Lot¹: 62280936

Manufacturing Date: 10JAN2014

TEST	SPECIFICATIONS	RESULTS
Phenotypic Analysis Cellular morphology Colony morphology ² Motility (wet mount) Hemolysis ² Biochemical characterization Catalase Coagulase ³ VITEK [®] 2 Compact (GP card)	Gram-positive cocci Report results Report results Report results Positive Report results Consistent with <i>S. aureus</i>	Gram-positive cocci Circular, low convex, entire, smooth and yellow (Figure 1) Non-motile β-hemolytic Positive Positive Consistent with <i>S. aureus</i>
Antibiotic Susceptibility Profile VITEK [®] (AST-GP71 card) ⁴ Beta-lactamase ⁵ Cefoxitin screen Benzylpenicillin Oxacillin Gentamicin Ciprofloxacin Levofloxacin Moxifloxacin Clindamycin (inducible resistance) Erythromycin Clindamycin Quinupristin/dalfopristin Linezolid Daptomycin Vancomycin Minocycline Tetracycline Tigecycline Nitrofurantoin Rifampicin Trimethoprim/sulfamethoxazole Etest [®] antibiotic test strips ⁶ Chloramphenicol ⁷ Teicoplanin ⁷	Report results Report results Resistant Resistant Sensitive Sensitive Report results Report results Report results Resistant Resistant Sensitive Sensitive Report results Sensitive Report results Report results Report results Report results Report results Sensitive Report results Sensitive	Positive Positive Resistant (≥ 0.5 µg/mL) Resistant (≥ 4 µg/mL) Sensitive (≤ 0.5 µg/mL) Sensitive (≤ 0.5 µg/mL) Sensitive (= 0.25 µg/mL) Sensitive (≤ 0.25 µg/mL) Negative Resistant (≥ 8 µg/mL) Resistant (≥ 8 µg/mL) Sensitive (≤ 0.25 µg/mL) Sensitive (= 2 µg/mL) Sensitive (= 0.25 µg/mL) Sensitive (≤ 0.5 µg/mL) Sensitive (≤ 0.5 µg/mL) Sensitive (≤ 1 µg/mL) Sensitive (≤ 0.12 µg/mL) Sensitive (≤ 16 µg/mL) Sensitive (≤ 0.5 µg/mL) Sensitive (≤ 10 µg/mL) Sensitive (= 3 µg/mL) Sensitive (= 0.75 µg/mL)
Genotypic Analysis Sequencing of 16S ribosomal RNA gene (~ 1500 base pairs) Riboprinter [®] Microbial Characterization System	Consistent with <i>S. aureus</i> Consistent with <i>S. aureus</i>	Consistent with <i>S. aureus</i> Consistent with <i>S. aureus</i>
Viability (post-freeze)²	Growth	Growth

¹*S. aureus*, strain N315 was deposited to BEI Resources as part of the NARSA collection. NR-45898 was produced by inoculation of the deposited material into Tryptic Soy broth and grown 25 hours at 37°C in an aerobic atmosphere. Broth inoculum was added to Tryptic Soy agar with 5%

defibrinated sheep blood kolles which were grown 21 hours at 37°C in an aerobic atmosphere to produce this lot. Purity of this lot was assessed for 7 days under propagation conditions.

²23 hours at 37°C and aerobic atmosphere on Tryptic Soy agar with 5% defibrinated sheep blood

³4 hours at 37°C in rabbit serum with 0.15% EDTA (Coagulase Plasma BBL™ 240827)

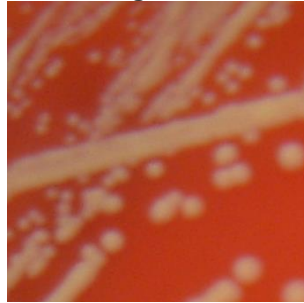
⁴Minimum Inhibitory Concentration (MIC); MIC Interpretation Guideline: CLSI M100-S22 (2012)

⁵The production of beta-lactamase was detected using a Nitrocefin dry slide (BBL™ 231749).

⁶24 hours at 37°C and aerobic atmosphere on Mueller Hinton agar

⁷For both chloramphenicol (bioMérieux Etest® 412308) and teicoplanin (bioMérieux Etest® 412459), a MIC ≤ 8 µg/mL is sensitive, a MIC = 16 µg/mL is intermediate and a MIC ≥ 32 µg/mL is resistant.

Figure 1



Date: 25 MAR 2014

Signature: 

Title: Technical Manager, BEI Authentication or designee

ATCC®, on behalf of BEI Resources, hereby represents and warrants that the material provided under this certificate has been subjected to the tests and procedures specified and that the results described, along with any other data provided in this certificate, are true and accurate to the best of ATCC®'s knowledge.

ATCC® is a trademark of the American Type Culture Collection.

You are authorized to use this product for research use only. It is not intended for human use.

