

Anaeroglobus geminatus, Strain F0357

Catalog No. HM-557

Product Description: *Anaeroglobus geminatus* (*A. geminatus*), strain F0357 was isolated in January 1982 from subgingival dental plaque of a 41-year-old male patient with moderate periodontitis in the United States.

Lot^{1,2}: 62072047

Manufacturing Date: 29OCT2013

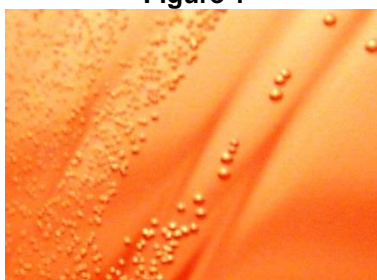
TEST	SPECIFICATIONS	RESULTS
Phenotypic Analysis Cellular morphology Colony morphology ³ Hemolysis on blood agar ³ Motility (wet mount)	Gram-negative cocci Report results Report results Non-motile	Gram-negative cocci Circular, convex, entire, smooth, translucent and colorless (Figure 1) Non-hemolytic Non-motile
Genotypic Analysis Sequencing of 16S ribosomal RNA gene (~ 1300 base pairs)	≥ 99% identical to GenBank: AGCJ01000054 (<i>A. geminatus</i> , strain F0357)	≥ 99% identical to GenBank: AGCJ01000054 (<i>A. geminatus</i> , strain F0357)
Viability (post-freeze)³	Growth	Growth

¹Quality control of HMP material is only performed to demonstrate that the material distributed by BEI Resources is identical to the deposited material. It should not be considered a complete characterization of the deposited organism.

²*A. geminatus*, strain F0357 was deposited by Jacques Izard, Assistant Member of the Staff, Department of Molecular Genetics, The Forsyth Institute, Boston, Massachusetts, USA. HM-557 was produced by inoculation of the deposited material into Wilkins-Chalgren broth and incubated for 97 hours at 37°C and anaerobic atmosphere (80% N₂: 20% CO₂). The material from the initial growth was passaged once in Wilkins-Chalgren broth for 93 hours at 37°C in an anaerobic atmosphere to produce this lot. Purity of this lot was assessed for 7 days under propagation conditions.

³99 hours at 37°C and anaerobic atmosphere on Tryptic Soy agar with 5% defibrinated sheep blood

Figure 1



Date: 02 APR 2014

Signature: 

Title: Technical Manager, BEI Authentication or designee

ATCC®, on behalf of BEI Resources, hereby represents and warrants that the material provided under this certificate has been subjected to the tests and procedures specified and that the results described, along with any other data provided in this certificate, are true and accurate to the best of ATCC®'s knowledge.

ATCC® is a trademark of the American Type Culture Collection. You are authorized to use this product for research use only. It is not intended for human use.

