

**Shiga Toxin Type 1 Toxoid, Chemically Inactivated**

**Catalog No. NR-4674**

This reagent is the tangible property of the U.S. Government.

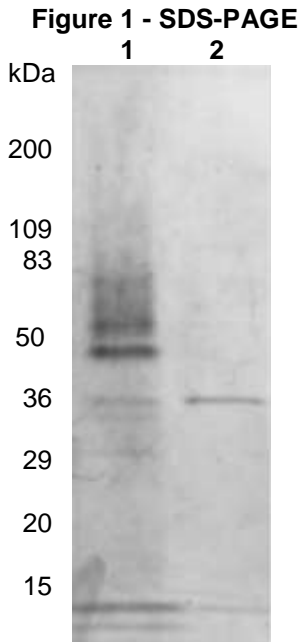
**Product Description:** Recombinant Shiga toxin type 1 (Stx1) was expressed in *Escherichia coli*, purified by affinity chromatography, and chemically inactivated with formaldehyde.

**Lot: 61145397**

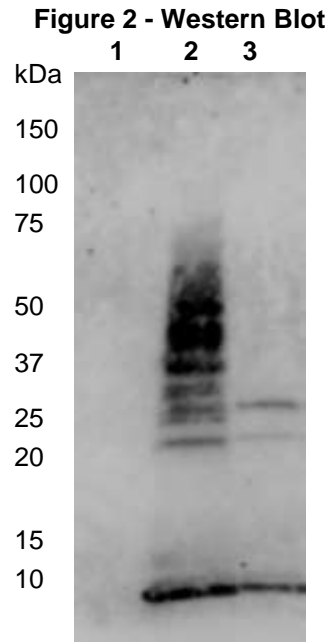
**Manufacturing Date: 27MAR2013**

TEST	SPECIFICATIONS	RESULTS
Appearance	Clear and colorless	Clear and colorless
SDS-PAGE (Figure 1)	Protein band of interest represents > 95% of total staining intensity above background	Stx1 (prior to treatment) represents > 95% of total staining intensity above background; formaldehyde treatment resulted in multiple cross-linked species
SELDI-TOF Mass Spectrometry of Stx1 Toxoid (Complex of One Subunit A and Five Subunit Bs)	Measured mass within 5% of expected mass (70508 daltons)	Measured mass (71457 daltons) within 1.3% of expected mass
Protein Content by Bicinchoninic Acid Protein Assay	Report results	8.4 µg per vial
Concentration by Bicinchoninic Acid Protein Assay	Report results	0.06 mg per mL
Functional Activity by Western Blot <sup>1</sup> (Figure 2) NR-4674 Carbonic anhydrase	Reactive Not reactive	Reactive Not reactive
Cytotoxicity in Vero Cells (Figure 3) NR-4674 Recombinant Stx1	Report results Report results	CD <sub>50</sub> ~ 1x10 <sup>-11</sup> M CD <sub>50</sub> ~ 1x10 <sup>-15</sup> M
Sterility	0.22 µm filter-sterilized	0.22 µm filter-sterilized
Endotoxin	< 10000 units per mg	< 357 units per mg

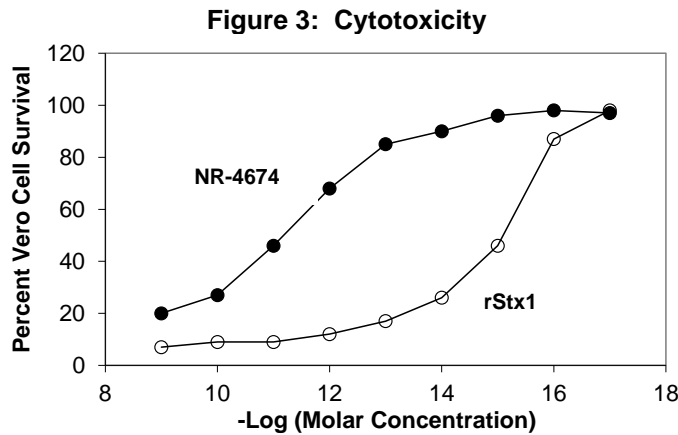
<sup>1</sup>Using anti-Stx1 polyclonal antibody produced in rabbit



Lane 1: NR-4674  
Lane 2: Recombinant Stx1 (prior to formaldehyde treatment)



Lane 1: Carbonic anhydrase  
Lane 2: NR-4674  
Lane 3: Recombinant Stx1



Date: 23 JUN 2014

Signature: *Dorothy C. Young*

Title: Technical Manager, BEI Authentication or designee

ATCC®, on behalf of BEI Resources, hereby represents and warrants that the material provided under this certificate has been subjected by the contractor to the tests and procedures specified and that the results described, along with any other data provided in this certificate, are true and accurate to the best of ATCC®'s knowledge.

ATCC® is a trademark of the American Type Culture Collection.  
You are authorized to use this product for research use only. It is not intended for human use.

