

Staphylococcus aureus, Strain TN-82

Catalog No. NR-46269

Product Description: *Staphylococcus aureus* (*S. aureus*), strain TN-82 was isolated in 2005 from an internal abscess in a 70-year-old female in Tennessee, USA. *S. aureus*, strain TN-82 is a clinically associated methicillin-resistant *S. aureus* (MRSA) strain.

Lot¹: 62436022

Manufacturing Date: 20MAR2014

TEST	SPECIFICATIONS	RESULTS
Phenotypic Analysis Cellular morphology Colony morphology ² Motility (wet mount) Hemolysis ² Biochemical Analysis Catalase Coagulase ³ VITEK [®] 2 Compact (GP card) VITEK [®] MS (MALDI-TOF)	Gram-positive cocci Report results Report results Report results Positive Report results Consistent with <i>S. aureus</i> Consistent with <i>S. aureus</i>	Gram-positive cocci Circular, low convex, entire, smooth and gray (Figure 1) Non-motile β-hemolytic Positive Positive Consistent with <i>S. aureus</i> Consistent with <i>S. aureus</i>
Antibiotic Susceptibility Profile VITEK [®] (AST-GP71card) ⁴ Beta-lactamase ⁵ Cefoxitin screen Benzylpenicillin Oxacillin Gentamicin Ciprofloxacin Levofloxin Moxifloxacin Clindamycin (inducible resistance) Erythromycin Quinupristin/dalfopristin Linezolid Daptomycin Vancomycin Minocycline Tetracycline Tigecycline Nitrofurantoin Rifampicin Trimethoprim/sulfamethoxazole Etest [®] antibiotic test strips ⁶ Chloramphenicol ⁷ Teicoplanin ⁷ Clindamycin ⁷	Report results Report results Report results Resistant Sensitive Report results Resistant Report results Report results Resistant Report results Sensitive Sensitive Sensitive Sensitive Report results Sensitive Report results Report results Sensitive Sensitive Sensitive Report results Sensitive Sensitive Sensitive Report results Sensitive Sensitive	Positive Positive Resistant (≥ 0.5 µg/mL) Resistant (≥ 4 µg/mL) Sensitive (≤ 0.5 µg/mL) Resistant (≥ 8 µg/mL) Resistant (≥ 8 µg/mL) Resistant (≥ 8 µg/mL) Negative Resistant (≥ 8 µg/mL) Sensitive (≤ 0.25 µg/mL) Sensitive (= 1 µg/mL) Sensitive (= 1 µg/mL) Sensitive (≤ 0.5 µg/mL) Sensitive (≤ 0.5 µg/mL) Sensitive (≤ 1 µg/mL) Sensitive (≤ 0.12 µg/mL) Sensitive (≤ 16 µg/mL) Sensitive (≤ 0.5 µg/mL) Sensitive (≤ 10 µg/mL) Sensitive (= 6µg/mL) Sensitive (= 1 µg/mL) Resistant (> 256 µg/mL) ⁸
Genotypic Analysis Sequencing of 16S ribosomal RNA gene (~ 1490 base pairs)	Consistent with <i>S. aureus</i>	Consistent with <i>S. aureus</i>
Viability (post-freeze)²	Growth	Growth

¹*S. aureus*, strain TN-82 was deposited to BEI Resources as part of the NARSA collection. NR-46269 was produced by inoculation of the deposited material into Tryptic Soy broth and grown 23 hours at 37°C in an aerobic atmosphere. Broth inoculum was added to Tryptic Soy agar with 5%

defibrinated sheep blood kolles which were grown 26 hours at 37°C in an aerobic atmosphere to produce this lot. Purity of this lot was assessed for 7 days under propagation conditions.

²22 hours at 37°C in an aerobic atmosphere on Tryptic Soy agar with 5% defibrinated sheep blood

³4 hours at 37°C in rabbit serum with 0.15% EDTA (Coagulase Plasma BBL™ 240827)

⁴Minimum Inhibitory Concentration (MIC); MIC Interpretation Guideline: CLSI M100-S22 (2012)

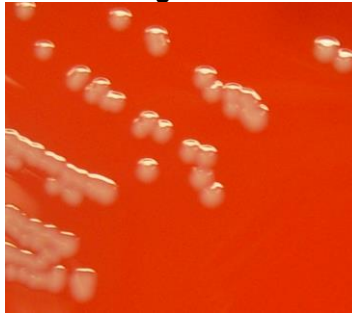
⁵The production of beta-lactamase was detected using a Cefinase™ Paper Disc (BBL™ 231650).

⁶24 hours at 37°C in an aerobic atmosphere on Mueller Hinton agar

⁷For both chloramphenicol (bioMérieux Etest® 412308) and teicoplanin (bioMérieux Etest® 412459), a MIC ≤ 8 µg/mL is sensitive, a MIC = 16 µg/mL is intermediate and a MIC ≥ 32 µg/mL is resistant. For clindamycin (bioMérieux Etest® 412314), a MIC ≤ 0.5 µg/mL is sensitive, a MIC between 1 and 2 µg/mL is intermediate and a MIC ≥ 4 µg/mL is resistant.

⁸*S. aureus*, strain TN-82 was deposited as being sensitive to clindamycin. ATCC® quality control determined that *S. aureus*, strain TN-82 is resistant to clindamycin. Repeat testing confirmed ATCC®'s initial results.

Figure 1



Date: 25 JUN 2014

Signature:

Title:

Technical Manager, BEI Authentication or designee

ATCC®, on behalf of BEI Resources, hereby represents and warrants that the material provided under this certificate has been subjected to the tests and procedures specified and that the results described, along with any other data provided in this certificate, are true and accurate to the best of ATCC®'s knowledge.

ATCC® is a trademark of the American Type Culture Collection.

You are authorized to use this product for research use only. It is not intended for human use.

