

***Vibrio parahaemolyticus*, Strain 0337-2111 (K1311) (Serotype O5:K17)**

**Catalog No. NR-22028**

**Product Description:** *Vibrio parahaemolyticus* (*V. parahaemolyticus*), strain 0337-2111 (K1311), serotype O5:K17 was isolated from an oyster in Alaska, USA.

**Lot<sup>1</sup>: 61913329**

**Manufacturing Date: 01AUG2013**

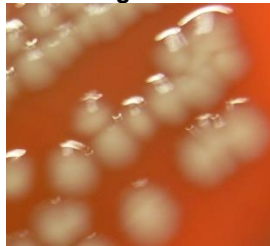
TEST	SPECIFICATIONS	RESULTS
<b>Phenotypic Analysis</b> Cellular morphology Colony morphology <sup>2</sup>  Hemolysis Biochemical characterization: Analytical profile index (API <sup>®</sup> 20E)	Report results Report results  Report results  Consistent with <i>V. parahaemolyticus</i>	Gram-negative rods Circular, low convex, entire, smooth, mucoid and gray (Figure 1) α-hemolysis  Consistent with <i>V. parahaemolyticus</i>
<b>Genotypic Analysis</b> Sequencing of 16S ribosomal RNA gene (~ 840 base pairs) Riboprinter <sup>®</sup> Microbial Characterization System	Consistent with <i>V. parahaemolyticus</i>  Consistent with <i>V. parahaemolyticus</i>	Consistent with <i>V. parahaemolyticus</i> <sup>3</sup>  Consistent with <i>V. parahaemolyticus</i>
<b>Viability (post-freeze)<sup>2</sup></b>	Growth	Growth

<sup>1</sup>NR-22028 was produced by inoculation of deposited material into Tryptic Soy broth and grown 24 hours in an aerobic atmosphere at 37°C. Broth inoculum was added to kolles which were grown 24 hours at 37°C in an aerobic atmosphere to produce this lot. Purity of this lot was assessed for 7 days under propagation conditions.

<sup>2</sup>24 hours at 37°C in an aerobic atmosphere on Tryptic Soy agar with 5% defibrinated sheep blood

<sup>3</sup>Also consistent with other *Vibrio* species

Figure 1



**Date:** 25 JUL 2014

**Signature:** 

**Title:** Technical Manager, BEI Authentication or designee

ATCC<sup>®</sup>, on behalf of BEI Resources, hereby represents and warrants that the material provided under this certificate has been subjected to the tests and procedures specified and that the results described, along with any other data provided in this certificate, are true and accurate to the best of ATCC<sup>®</sup>'s knowledge.

ATCC<sup>®</sup> is a trademark of the American Type Culture Collection. You are authorized to use this product for research use only. It is not intended for human use.

