

**Expression Vector Containing the Low Density Lipoprotein Receptor (LDL-R) Gene Fragment from *Biomphalaria glabrata*, Recombinant in *Escherichia coli***

**Catalog No. NR-41870**

This reagent is the tangible property of the U.S. Government.

**Product Description:** NR-41870 is an expression vector (pCR<sup>®</sup>2.1-TOPO<sup>®</sup>) containing a fragment of the LDL-R gene from *Biomphalaria glabrata*, transformed into *Escherichia coli* (*E. coli*), strain DH5 $\alpha$ .

**Lot<sup>1,2</sup>: 10032012**

**Manufacturing Date: 04SEP2012**

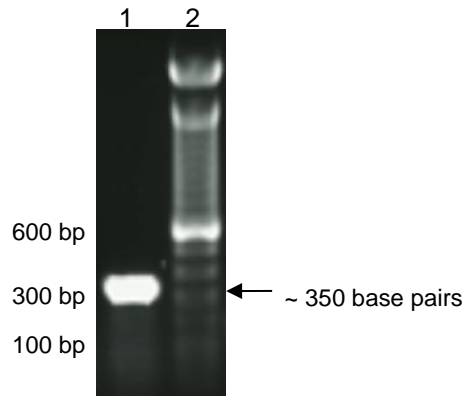
TEST	SPECIFICATIONS	RESULTS
<b>Qualification by PCR<sup>3</sup></b> Amplification with LDL-R gene specific gene primer pair	350 base pair amplicon	~ 350 base pair amplicon (Figure 1)

<sup>1</sup>QC testing was performed by the Biomedical Research Institute, Rockville, MD (NIH-NIAID Contract HHSN2722010000051)

<sup>2</sup>Plasmid DNA was extracted from *E. coli* culture grown overnight in Luria-Bertani (LB) broth with 100  $\mu$ g/mL ampicillin, using a commercially available kit.

<sup>3</sup>Ittiprasert, W., et al. "Identification of Immediate Response Genes Dominantly Expressed in Juvenile Resistant and Susceptible *Biomphalaria glabrata* Snails Upon Exposure to *Schistosoma mansoni*." *Mol. Biochem. Parasitol.* 169 (2010): 27-39. PubMed: 19815034.

**Figure 1: Amplification of LDL-R Gene Fragment**



Lane 1: 100 base pair ladder  
Lane 2: 100 ng of amplified PCR product

**Date:** 15 AUG 2014

**Signature:**

**Title:** Technical Manager, BEI Authentication or designee

ATCC<sup>®</sup>, on behalf of BEI Resources, hereby represents and warrants that the material provided under this certificate has been subjected by the contributor to the tests and procedures specified and that the results described, along with any other data provided in this certificate, are true and accurate to the best of ATCC<sup>®</sup>'s knowledge.

ATCC<sup>®</sup> is a trademark of the American Type Culture Collection.  
You are authorized to use this product for research use only. It is not intended for human use.

