

**Monoclonal Anti-Shiga Toxin 2 Subunit A (produced *in vitro*) (Similar to 11E10)**

**Catalog No. NR-846**

**Product Description:** Mouse monoclonal antibody to the A subunit of Shiga-like toxin 2 from *Escherichia coli* was purified by protein A affinity chromatography from supernatants obtained from a mouse hybridoma clonal cell line (ATCC<sup>®</sup> CRL-1907<sup>™</sup>) that produces monoclonal antibody 11E10.

**Lot: 4469048**

**Manufacturing Date: AUG2005**

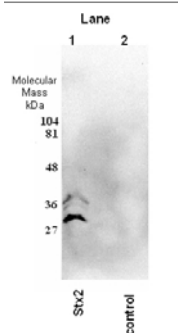
TEST	SPECIFICATIONS	RESULTS
<b>Appearance</b>	Clear and colorless No particulate matter	Clear and colorless No particulate matter
<b>SDS-PAGE (SYPRO Orange densitometer scan)</b>	Dominant band ~ 150 kDa > 90% pure	Dominant band ~ 150 kDa > 90% pure
<b>Concentration by Bicinchoninic Acid Protein Assay</b>	1 mg/mL	1 mg/mL
<b>Functional Activity</b> Western Blot <sup>1</sup> Shiga-like toxin 2 Subunit A Shiga-like toxin 1 Subunit A Shiga-like toxin 2  ELISA titer <sup>2</sup> Shiga-like toxin 2 Ricin holotoxin	Reactive Not reactive Reactive  Report results Not reactive	Reactive Not reactive Reactive with both reduced (see Figure 1) and unreduced toxin  > 1:1,000 Not reactive

<sup>1</sup>A dilution of 1:5000 is recommended.

<sup>2</sup>A dilution of 1:10000 is recommended.

**Figure 1**

MAb 11E10  
anti-Shiga Toxin 2  
(stx2) A subunit



**Date:** 03 OCT 2006

**Signature:** Signature on File

**Title:** Technical Manager, BEI Authentication

ATCC<sup>®</sup>, on behalf of BEI Resources, hereby represents and warrants that the material provided under this certificate has been subjected by the contractor to the tests and procedures specified and that the results described, along with any other data provided in this certificate, are true and accurate to the best of ATCC<sup>®</sup>'s knowledge.

ATCC<sup>®</sup> is a trademark of the American Type Culture Collection.  
You are authorized to use this product for research use only. It is not intended for human use.