

***Clostridium difficile*, Strain P21**

Catalog No. NR-32897

Product Description: *Clostridium difficile* (*C. difficile*), strain P21 is a toxigenic strain obtained in 2005 from fecal material of a human patient with a relapsing *C. difficile* infection in western Pennsylvania, USA.

Lot¹: 62108008

Manufacturing Date: 30OCT2013

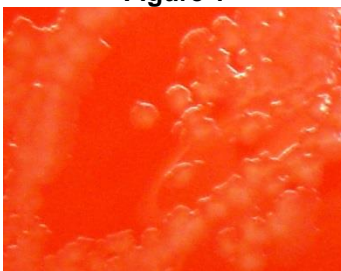
TEST	SPECIFICATIONS	RESULTS
Phenotypic Analysis Cellular morphology Colony morphology ² Motility (wet mount) Hemolysis ² Biochemical tests Remel RapID™ ANA II Panel Esculin hydrolysis Gelatin hydrolysis	Gram-positive rods Report results Motile Report results Consistent with <i>C. difficile</i> Positive Positive	Gram-positive rods Irregular, flat, undulate, opaque and gray (Figure 1) Motile α-hemolytic Consistent with <i>C. difficile</i> Positive Positive
Genotypic Analysis Sequencing of 16S ribosomal RNA gene (~ 890 base pairs)	Consistent with <i>C. difficile</i>	Consistent with <i>C. difficile</i>
Purity (post-freeze)³	Growth consistent with <i>C. difficile</i>	Growth consistent with <i>C. difficile</i>
Viability (post-freeze)²	Growth	Growth

¹NR-32897 was produced by inoculation of the deposited material into Modified Reinforced Clostridial medium and incubated for 72 hours at 37°C in an anaerobic atmosphere (< 5% O₂; Remel™ Pack-Anaero™ R681001). Broth inoculum was added to Tryptic Soy agar with 5% sheep blood kolles which were grown 47 hours at 37°C in an anaerobic atmosphere to produce this lot.

²44 hours at 37°C in an anaerobic atmosphere on Tryptic Soy agar with 5% defibrinated sheep blood

³Purity of this lot was assessed for 7 days on Tryptic Soy agar with 5% defibrinated sheep blood at 37°C in an anaerobic atmosphere.

Figure 1



Date: 22 AUG 2014

Signature:

Title: Technical Manager, BEI Authentication or designee

ATCC®, on behalf of BEI Resources, hereby represents and warrants that the material provided under this certificate has been subjected to the tests and procedures specified and that the results described, along with any other data provided in this certificate, are true and accurate to the best of ATCC®'s knowledge.

ATCC® is a trademark of the American Type Culture Collection. You are authorized to use this product for research use only. It is not intended for human use.

