

***Borrelia burgdorferi*, Signature-Tagged Mutagenesis Library Clone T04TC203 (Gene BB_0767)**

Catalog No. NR-22764

Product Description: *Borrelia burgdorferi* (*B. burgdorferi*), strain B31 5A18NP1 STM library clone T04TC203 was produced by signature-tagged mutagenesis (STM) of the BB_0767 gene.

Lot¹: 62417930

Manufacturing Date: 18MAR2014

TEST	SPECIFICATIONS	RESULTS
Phenotypic Analysis Cellular morphology ² Motility (wet mount)	Spirochete Motile	Spirochete Motile
Genotypic Analysis Sequencing of 16S ribosomal RNA gene (~ 1440 base pairs)	Consistent with <i>B. burgdorferi</i>	Consistent with <i>B. burgdorferi</i> ³
Purity (post-freeze)⁴	No growth observed	No growth observed
Viability (post-freeze) Visual observation LIVE/DEAD [®] BacLight [™] Bacterial Viability ⁵	Growth Green fluorescence visible	Growth ² Green fluorescence visible (Figure 1) ⁵

¹NR-22764 was produced by inoculation of the deposited material into Revised Barbour-Stoenner-Kelly medium supplemented with 200 µg/mL kanamycin and 40 µg/mL gentamicin and grown 12 days at 32°C in an aerobic atmosphere. The material from the initial growth was passaged once in Barbour-Stoenner-Kelly medium supplemented with 200 µg/mL kanamycin and 40 µg/mL gentamicin for 12 days at 32°C in an aerobic atmosphere to produce this lot.

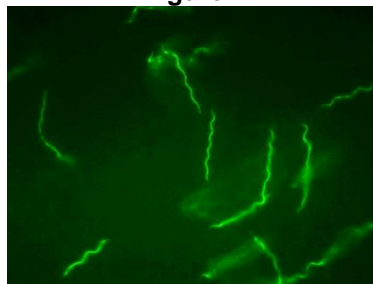
²12 days at 32°C in an aerobic atmosphere Revised Barbour-Stoenner-Kelly medium supplemented with 200 µg/mL kanamycin and 40 µg/mL gentamicin

³>99.9% identical to GenBank: AE000783 (*B. burgdorferi*, strain B31)

⁴12 days at 37°C and 5% CO₂ on Tryptic Soy agar with 5% defibrinated sheep blood

⁵Determined after 12 days incubation under cultivation conditions with LIVE/DEAD[®] BacLight[™] Bacterial Viability Kit, 100x magnification (Invitrogen[™] L34856). Cells with a compromised membrane that are dead or dying will stain red, while cells with an intact membrane will stain green.

Figure 1



Date: 25 SEP 2014

Signature: 

Title: Technical Manager, BEI Authentication or designee

ATCC[®], on behalf of BEI Resources, hereby represents and warrants that the material provided under this certificate has been subjected to the tests and procedures specified and that the results described, along with any other data provided in this certificate, are true and accurate to the best of ATCC[®]'s knowledge.

ATCC[®] is a trademark of the American Type Culture Collection.

You are authorized to use this product for research use only. It is not intended for human use.

