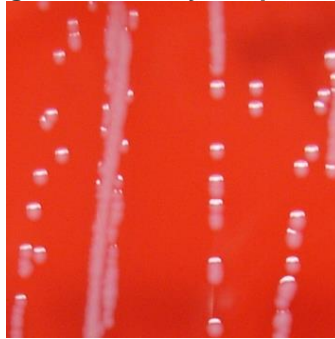


- ¹*S. aureus*, strain SA LinR #12 was deposited to BEI Resources as part of the NARSA collection. NR-45924 was produced by inoculation of the deposited material into Tryptic Soy broth and grown 25 hours at 37°C in an aerobic atmosphere. Broth inoculum was added to Tryptic Soy agar with 5% defibrinated sheep blood kolles which were grown 19 hours at 37°C in an aerobic atmosphere to produce this lot.
- ²22 hours at 37°C in an aerobic atmosphere on Tryptic Soy agar with 5% defibrinated sheep blood
- ³4 hours at 37°C in rabbit serum with 0.15% EDTA (Coagulase Plasma BBL™ 240827)
- ⁴Percent probabilities above 90% indicate a close match to the typical biochemical pattern for the given organism, with a percent probability of 99% being a perfect match between the test reaction pattern and the unique biochemical pattern of the given organism or organism group. For additional information, please refer to O'Hara, C.M. and J. M. Miller. "Evaluation of the Vitek 2 ID-GNB Assay for Identification of Members of the Family *Enterobacteriaceae* and Other Nonenteric Gram-Negative Bacilli and Comparison with the Vitek GNI+ Card." *J. Clin. Microbiol.* 41 (2003): 2096-2101. PubMed: 12734254.
- ⁵Minimum Inhibitory Concentration (MIC); MIC Interpretation Guideline: CLSI M100-S22 (2012)
- ⁶The production of beta-lactamase was detected using a Cefinase™ Paper Disc (BBL™ 231650).
- ⁷*S. aureus*, strain SA Lin #12 was deposited as having an intermediate susceptibility to erythromycin. Antibiotic susceptibility testing performed in duplicate identified *S. aureus*, strain SA Lin #12 as sensitive to erythromycin.
- ⁸MIC Interpretation Guideline: EUCAST Version 4.0 (2014)
- ⁹24 hours at 37°C in an aerobic atmosphere on Mueller Hinton agar
- ¹⁰For both chloramphenicol (bioMérieux Etest® 412308) and teicoplanin (bioMérieux Etest® 412459), a MIC ≤ 8 µg/mL is sensitive, a MIC = 16 µg/mL is intermediate and a MIC ≥ 32 µg/mL is resistant.
- ¹¹Purity of this lot was assessed for 7 days on Tryptic Soy agar with 5% defibrinated sheep blood at 37°C in an aerobic atmosphere.

Figure 1: Colony Morphology



Date: 28 MAR 2016

Signature:

BEI Resources Authentication

ATCC®, on behalf of BEI Resources, hereby represents and warrants that the material provided under this certificate has been subjected to the tests and procedures specified and that the results described, along with any other data provided in this certificate, are true and accurate to the best of ATCC®'s knowledge.

ATCC® is a trademark of the American Type Culture Collection.

You are authorized to use this product for research use only. It is not intended for human use.

