

***Acinetobacter baumannii*, Strain 5-143 (OIFC143)**

Catalog No. NR-17781

Product Description: *Acinetobacter baumannii* (*A. baumannii*), strain 5-143 (OIFC143) is a human isolate collected in July 2003 from the thigh wound of a patient.

Lot¹: 62711005

Manufacturing Date: 18AUG2014

TEST	SPECIFICATIONS	RESULTS
Phenotypic Analysis Cellular morphology Colony morphology ² Growth at 44°C ^{3,4} Motility (wet mount) Biochemical tests: Catalase Oxidase VITEK [®] MS (MALDI-TOF)	Gram-negative rods Report results Growth Report results Positive Negative Consistent with <i>A. baumannii</i>	Gram-negative rods Circular, convex, entire, opaque, smooth, mucoid and cream (Figure 1) Growth Non-motile Positive Negative Consistent with <i>A. baumannii</i> complex ⁵
Genotypic Analysis Sequencing of 16S ribosomal RNA gene (~ 1480 base pairs)	Consistent with <i>A. baumannii</i>	Consistent with <i>A. baumannii</i> ⁶
Purity (post-freeze)⁷	Growth consistent with <i>A. baumannii</i>	Growth consistent with <i>A. baumannii</i>
Viability (post-freeze)²	Growth	Growth

¹NR-17781 was produced by inoculation of the deposited material into Tryptic Soy broth and incubated 20 hours at 37°C in an aerobic atmosphere.

Broth inoculum was added to Tryptic Soy agar kolles which were grown 20 hours under propagation conditions to produce this lot.

²27 hours on Tryptic Soy agar under propagation conditions

³20 hours at ~44°C in an aerobic atmosphere on Tryptic Soy agar

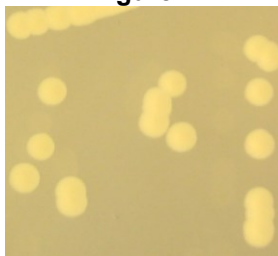
⁴Growth at 44°C differentiates *A. baumannii* from *A. calcoaceticus* and *A. pittii*, which do not grow at 44°C.

⁵*A. baumannii* complex species include *A. baumannii*, *A. calcoaceticus*, *A. pittii* and *A. nosocomialis*.

⁶100% identical to *A. baumannii*, strain 5-143 (OIFC143) (GenBank: AFDL01000002.1)

⁷Purity of this lot was assessed for 7 days on Tryptic Soy agar with 5% defibrinated sheep blood under propagation conditions.

Figure 1



Date: 19 NOV 2014

Signature:

Title:

Technical Manager, BEI Authentication or designee

ATCC[®], on behalf of BEI Resources, hereby represents and warrants that the material provided under this certificate has been subjected to the tests and procedures specified and that the results described, along with any other data provided in this certificate, are true and accurate to the best of ATCC[®]'s knowledge.

ATCC[®] is a trademark of the American Type Culture Collection.

You are authorized to use this product for research use only. It is not intended for human use.

