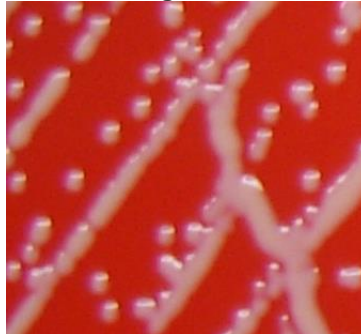


- ¹*S. aureus*, strain LIM 2 was deposited to BEI Resources as part of the NARSA collection. NR-45881 was produced by inoculation of the deposited material into Tryptic Soy broth and grown 24 hours at 37°C in an aerobic atmosphere. Broth inoculum was added to Tryptic Soy agar with 5% defibrinated sheep blood kolles which were grown 26 hours at 37°C in an aerobic atmosphere to produce this lot.
- ²24 hours at 37°C in an aerobic atmosphere on Tryptic Soy agar with 5% defibrinated sheep blood
- ³4 hours at 37°C in rabbit serum with 0.15% EDTA (Coagulase Plasma BBL™ 240827)
- ⁴Minimum Inhibitory Concentration (MIC); MIC Interpretation Guideline: CLSI M100-S22 (2012)
- ⁵The production of beta-lactamase was detected using a Cefinase™ Paper Disc (BBL™ 231650).
- ⁶24 hours at 37°C in an aerobic atmosphere on Mueller Hinton agar
- ⁷For both chloramphenicol (bioMérieux Etest® 412308) and teicoplanin (bioMérieux Etest® 412459), a MIC ≤ 8 µg/mL is sensitive, a MIC = 16 µg/mL is intermediate, and a MIC ≥ 32 µg/mL is resistant.
- ⁸Purity of this lot was assessed for 7 days on Tryptic Soy agar with 5% defibrinated sheep blood at 37°C in an aerobic atmosphere.

Figure 1



Date: 01 DEC 2014

Signature: 

Title: Technical Manager, BEI Authentication or designee

ATCC®, on behalf of BEI Resources, hereby represents and warrants that the material provided under this certificate has been subjected to the tests and procedures specified and that the results described, along with any other data provided in this certificate, are true and accurate to the best of ATCC®'s knowledge.

ATCC® is a trademark of the American Type Culture Collection.

You are authorized to use this product for research use only. It is not intended for human use.

