

**Candida albicans, Strain 19F**

**Catalog No. NR-29449**

**Product Description:** *Candida albicans* (*C. albicans*), strain 19F is a vaginal isolate from a person with vaginitis collected in Ann Arbor, Michigan, USA, between 1990 and 1992. Strain 19F is a member of genetic clade I and is known to have an  $\alpha/\alpha$  *MTL* genotype.

**Lot<sup>1</sup>: 60952554**

**Manufacturing Date: 11MAY2012**

TEST	SPECIFICATIONS	RESULTS
<b>Phenotypic Analysis</b> Cellular morphology <sup>2</sup>  Colony morphology <sup>2</sup>  CHROMagar Candida Testing <sup>3</sup> VITEK <sup>®</sup> 2 Systems Version: 05.01 (YST card)	Report results  Report results  Green colonies ( <i>C. albicans</i> ) Consistent with <i>C. albicans</i>	Globose to ovoid, thin-walled, usually single or budding (Figure 1A) Cream, dome-shaped, smooth, glistening, often becoming wrinkled with a mycelial border (Figure 1B) Green colonies ( <i>C. albicans</i> ) Consistent with <i>C. albicans</i>
<b>Genotypic Analysis</b> Sequencing of partial 18S rRNA gene, internal transcribed spacer (ITS) 1, 5.8S rRNA gene, ITS 2, partial 28S rRNA (~ 570 base pairs) Sequencing of 26S rRNA gene (~ 620 base pairs)	Consistent with <i>C. albicans</i>  Consistent with <i>C. albicans</i>	Consistent with <i>C. albicans</i>  Consistent with <i>C. albicans</i> <sup>4</sup>
<b>Purity (7 days)<sup>5</sup></b> Nutrient Broth with 0.1% Yeast Extract at 25°C Nutrient Broth with 0.1% Yeast Extract at 37°C	No bacterial growth No bacterial growth	No bacterial growth No bacterial growth
<b>Viability (post-freeze)<sup>2</sup></b>	Growth	Growth

<sup>1</sup>The deposited material was inoculated into Yeast Mold broth and incubated for 3 days at 25°C in an aerobic atmosphere to produce this lot.

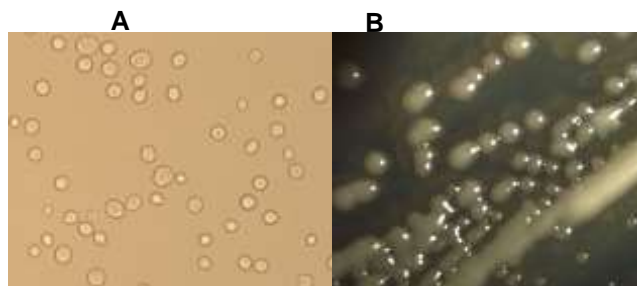
<sup>2</sup>4 days at 25°C in an aerobic atmosphere on Yeast Mold agar

<sup>3</sup>CHROMagar displays high sensitivity and specificity for three of the major *Candida* species (Odds, F. C., and R. Bernarts. "CHROMagar Candida, a New Differential Isolation Medium for the Presumptive Identification of Clinically Important *Candida* species." *J. Clin. Microbiol.* 32 (1994): 1923-1929. PubMed: 7989544.)

<sup>4</sup>Also consistent with *C. africana*

<sup>5</sup>Clarity of broth was determined by visual inspection after 7 days at 25°C and 37°C in an aerobic atmosphere.

**Figure 1**



**Date:** 09 DEC 2014

**Signature:** 

**Title:** Technical Manager, BEI Authentication or designee

ATCC<sup>®</sup>, on behalf of BEI Resources, hereby represents and warrants that the material provided under this certificate has been subjected to the tests and procedures specified and that the results described, along with any other data provided in this certificate, are true and accurate to the best of ATCC<sup>®</sup>'s knowledge.

ATCC<sup>®</sup> is a trademark of the American Type Culture Collection.

You are authorized to use this product for research use only. It is not intended for human use.

