

**Genomic DNA from *Salmonella enterica* subsp. *enterica*, Strain Ty2 (Serovar Typhi)**

**Catalog No. NR-543**

**Product Description:** Genomic DNA was obtained from a preparation of *Salmonella enterica* (*S. enterica*) subsp. *enterica*, strain Ty2 (serovar Typhi).

**Lot<sup>1</sup>: 61740162**

**Manufacturing Date: 21MAY2013**

TEST	SPECIFICATIONS	RESULTS
<b>Sequencing of 16S Ribosomal RNA Gene (~ 1500 base pairs)</b>	Consistent with <i>S. enterica</i>	Consistent with <i>S. enterica</i>
<b>Agarose Gel Electrophoresis</b>	High molecular weight chromosomal DNA	High molecular weight chromosomal DNA (Figure 1)
<b>Concentration by PicoGreen<sup>®</sup> Measurement</b>	0.7 to 1.5 µg in 25 to 100 µL per vial	1.2 µg in 29 µL per vial (41 µg/mL)
<b>Functional Activity by PCR Amplification</b> 16S ribosomal RNA gene	~ 1500 base pair amplicon	~ 1500 base pair amplicon
<b>OD<sub>260</sub>/OD<sub>280</sub> Ratio</b>	1.7 to 2.0	2.0
<b>Bacterial Inactivation</b> 10% of total yield plated on Tryptic Soy agar with 5% defibrinated sheep blood <sup>2,3</sup>	No viable bacteria detected	No viable bacteria detected

<sup>1</sup>*S. enterica* subsp. *enterica*, strain Ty2 (serovar Typhi) was deposited by Guy Plunkett, III, Ph.D. of the University of Wisconsin-Madison, Madison, Wisconsin. The bacterial preparation used for extraction of genomic DNA was produced by culture of BEI Resources NR-514 (lot 3834295). Genomic DNA was extracted using proprietary technology.

<sup>2</sup>7 days at 37°C in an aerobic atmosphere

<sup>3</sup>An extraction procedure was used that has been shown to consistently inactivate 100% of Gram-negative and Gram-positive bacteria.

**Date:** 15 DEC 2014

**Signature:**



**Title:**

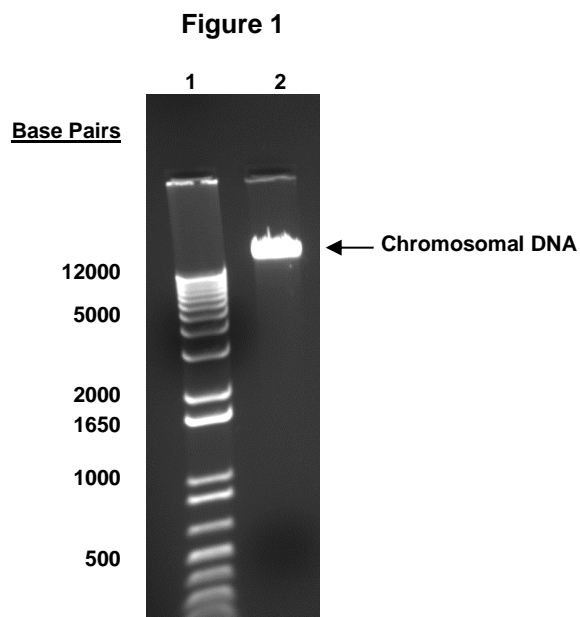
Technical Manager, BEI Authentication or designee

ATCC<sup>®</sup>, on behalf of BEI Resources, hereby represents and warrants that the material provided under this certificate has been subjected to the tests and procedures specified and that the results described, along with any other data provided in this certificate, are true and accurate to the best of ATCC<sup>®</sup>'s knowledge.

ATCC<sup>®</sup> is a trademark of the American Type Culture Collection.

You are authorized to use this product for research use only. It is not intended for human use.





Lane 1: Invitrogen™ TrackIt 1 Kb Plus DNA Ladder™  
Lane 2: 200 ng of NR-543