

**Shuttle Vector pFNLTP1 for Gene Expression in *Francisella* Species and *Escherichia coli***

**Catalog No. NR-4194**

**Product Description:** NR-4194 is a shuttle vector developed for use in a variety of genetic procedures in both *Francisella* species and *Escherichia coli* (*E. coli*), including characterization of virulence determinants. pFNLTP1 was obtained by spontaneous deletion of pTOPO/FNL10 and contains genes that confer resistance to kanamycin and ampicillin. The plasmid was transformed into *E. coli* DH5 $\alpha$  cells (clone TCZ564) and extracted using a QIAGEN<sup>®</sup> Plasmid Mega Kit. pFNLTP1 has a molecular weight of 6872 base pairs.

**Lot<sup>1</sup>: 60244293**

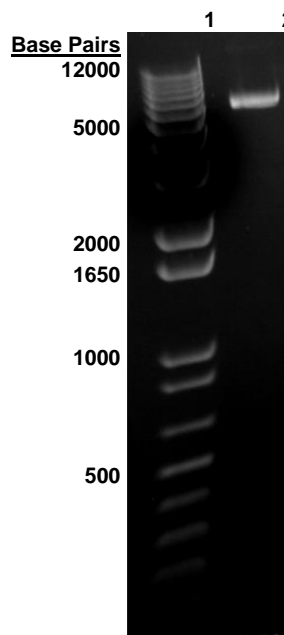
**Manufacturing Date: 01SEP2011**

TEST	SPECIFICATIONS	RESULTS
Sequencing of pFNLTP1 Coding Region (~ 6870 base pairs)	Identical to shuttle vector pFNLTP1 (GenBank: AY622904)	Identical to shuttle vector pFNLTP1 (GenBank: AY622904)
Agarose Gel Electrophoresis Undigested	~ 7000 base pairs	~ 7000 base pairs (Figure 1)
Concentration by PicoGreen <sup>®</sup> Measurement	0.7 to 1.5 $\mu$ g in 25 to 100 $\mu$ L per vial	0.93 $\mu$ g in 84 $\mu$ L per vial (11 $\mu$ g/mL)
OD <sub>260</sub> /OD <sub>280</sub> Ratio	1.7 to 2.0	1.8
Effective Bacterial Transformation	$\geq$ 100 colonies per ng	$\geq$ 100 colonies per ng

<sup>1</sup>The pFNLTP1 plasmid was deposited in host *E. coli* DH5 $\alpha$  cells (clone TCZ564) with no insert and extracted using a Qiagen Plasmid Mega Kit (QIAGEN<sup>®</sup> 12181).

**Figure 1: Agarose Gel of Uncut NR-4194**

Lane 1: Invitrogen<sup>™</sup> TrackIt 1 Kb Plus DNA Ladder<sup>™</sup>  
 Lane 2: Uncut NR-4194



**Date:** 29 JAN 2015

**Signature:** 

**Title:** Technical Manager, BEI Authentication or designee

ATCC<sup>®</sup>, on behalf of BEI Resources, hereby represents and warrants that the material provided under this certificate has been subjected to the tests and procedures specified and that the results described, along with any other data provided in this certificate, are true and accurate to the best of ATCC<sup>®</sup>'s knowledge.

ATCC<sup>®</sup> is a trademark of the American Type Culture Collection.  
You are authorized to use this product for research use only. It is not intended for human use.

