

Mink Interferon Alpha 13 Protein, Recombinant from Baculovirus

Catalog No. NR-48766

This reagent is the property of the U.S. Government.

Product Description: A recombinant form of the mink interferon alpha (IFN- α) 13 protein with a glutathione S-transferase (GST) expression tag was produced in Sf9 insect cells using a baculovirus expression vector system, purified by GST affinity chromatography, treated with thrombin to remove the GST tag, and further purified prior to final formulation.

Lot: 62653662

Manufacturing Date: 05FEB2014

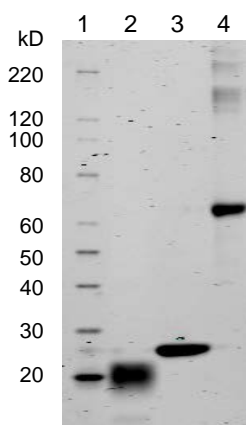
TEST	SPECIFICATIONS	RESULTS
Appearance	Clear and colorless	Clear and colorless
Purity by SDS-PAGE Densitometry Scan	Protein band of interest represents $\geq 90\%$ of total staining intensity above background	Protein band of ~ 20 kDa accounts for $\sim 90\%$ of total staining intensity above background (Figure 1)
Concentration by Bradford Assay¹	Report results	100 μ g per mL
Final Product Quantity per vial Volume per vial	Report results Report results	50 μ g 500 μ L
Identification by Western Blot²	Report results	Reactive (Figure 2)
Identification by ELISA^{2,3}	Report results	Reactive (Figure 3)
Endotoxin Content (Limulus Amoebocyte Lysate Assay)	Report results	> 10,000 EU per mg
Sterility	0.2 μ m filtered	0.2 μ m filtered

¹Using BSA as a standard

²Using serum from a mouse immunized by subcutaneous injection with recombinant mink IFN- α 13 emulsified in Freund's adjuvant

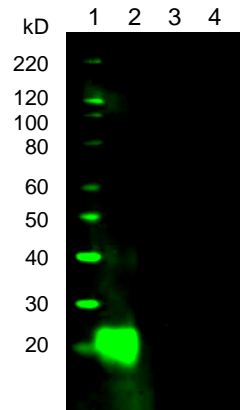
³Plates were coated with 20 ng per well of NR-48766; pre-immune serum was used as a negative control.

Figure 1: SDS-PAGE



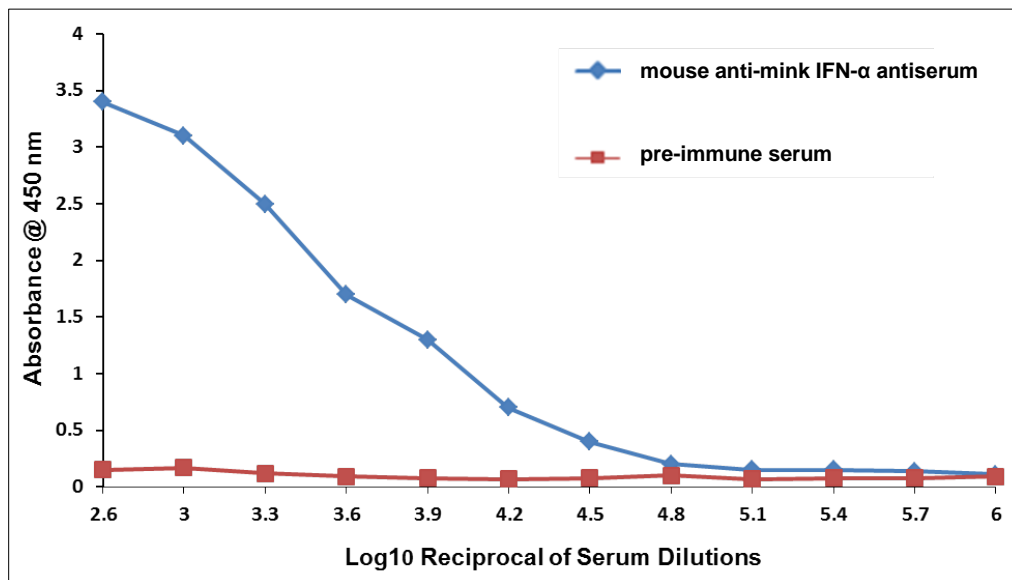
Lane 1: Magic Marker™ Standard
 Lane 2: NR-48766, 1.0 μ g
 Lane 3: GST, 1.0 μ g
 Lane 4: BSA, 1.0 μ g

Figure 2: Western Blot



Lane 1: Magic Marker™ Standard
 Lane 2: NR-48766, 1.0 µg
 Lane 3: GST, 1.0 µg
 Lane 4: BSA, 1.0 µg

Figure 3: ELISA



Date: 31 MAR 2015

Signature: *Michael R. Gynther*

Title: Technical Manager, BEI Authentication or designee

ATCC®, on behalf of BEI Resources, hereby represents and warrants that the material provided under this certificate has been subjected to the tests and procedures specified and that the results described, along with any other data provided in this certificate, are true and accurate to the best of ATCC®'s knowledge.

ATCC® is a trademark of the American Type Culture Collection.
 You are authorized to use this product for research use only. It is not intended for human use.

