

Genomic DNA from *Leishmania major*, Strain NIH SD (MHOM/SN/74/SD)

Catalog No. NR-48764

Product Description: Genomic DNA was isolated from *Leishmania major* (*L. major*), strain NIH SD (MHOM/SN/74/SD), which is a wild-type strain that was isolated in 1973 from a human patient with cutaneous leishmaniasis in Senegal, West Africa.

Lot¹: 62655031

Manufacturing Date: 01MAY2014

TEST	SPECIFICATIONS	RESULTS
Agarose Gel Electrophoresis	High molecular weight chromosomal DNA	High molecular weight chromosomal DNA (Figure 1)
Content by PicoGreen[®] Measurement	1 to 3 µg in 25 to 150 µL per vial	2.4 µg in 25 µL per vial (96 µg/mL)
Functional Activity by PCR Amplification² 18S ribosomal RNA gene Internal transcribed spacer (ITS) 1, 5.8S ribosomal RNA gene, ITS 2	~ 2500 base pair amplicon ~ 1200 base pair amplicon	~ 2500 base pair amplicon ~ 1200 base pair amplicon
Genotypic Analysis Sequencing of 18S ribosomal RNA gene and ITS 1 (~ 1640 base pairs) Sequencing of ITS 1, 5.8S ribosomal RNA gene, ITS 2 (~ 560 base pairs)	Consistent with <i>L. major</i> Consistent with <i>L. major</i>	Consistent with <i>L. major</i> ³ Consistent with <i>L. major</i>
OD₂₆₀/OD₂₈₀ Ratio	1.6 to 2.1	1.9
Inactivation of Source Culture 10% of vial contents in Modified M199 medium ⁴	No viable organisms detected	No viable organisms detected

¹NR-48764 was produced from a culture of BEI Resources NR-42488 lot 61928844. Genomic DNA was extracted using proprietary technology.

²Primer sequences and conditions for PCR are available upon request.

³Also consistent with other *Leishmania* species

⁴Incubated in Modified M199 medium (Lonza 12-109F) supplemented with 10% heat-inactivated fetal bovine serum and 10 µg/mL hemin for 7 days at 25°C in an aerobic atmosphere

Date: 02 APR 2015

Signature:



Title: Technical Manager, BEI Authentication or designee

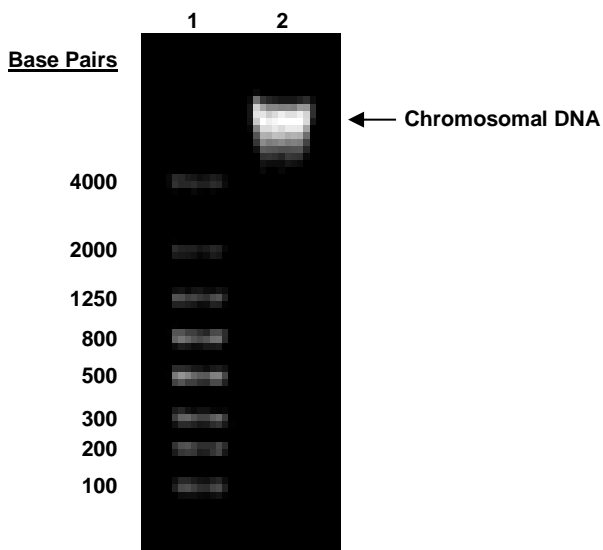
ATCC[®], on behalf of BEI Resources, hereby represents and warrants that the material provided under this certificate has been subjected to the tests and procedures specified and that the results described, along with any other data provided in this certificate, are true and accurate to the best of ATCC[®]'s knowledge.

ATCC[®] is a trademark of the American Type Culture Collection.

You are authorized to use this product for research use only. It is not intended for human use.



Figure 1



Lane 1: Lonza FlashGel™ 4 kb DNA Marker
Lane 2: 288 ng of NR-48764