

Genomic DNA from *Acanthamoeba* sp., Strain CDC:12741:1

Catalog No. NR-46511

Product Description: Genomic DNA was isolated from *Acanthamoeba* sp., strain CDC:12741:1, which was isolated from lung tissue. *Acanthamoeba* sp., strain CDC:12741:1 was deposited to BEI Resources as type T4 based on 18S ribosomal RNA gene sequence analysis.

Lot¹: 62344136

Manufacturing Date: 03DEC2013

TEST	SPECIFICATIONS	RESULTS
Agarose Gel Electrophoresis	High molecular weight chromosomal DNA	High molecular weight chromosomal DNA (Figure 1)
Content by PicoGreen[®] Measurement²	1 to 3 µg in 25 to 150 µL per vial	1.8 µg in 160 µL per vial (11 µg/mL)
Functional Activity by PCR Amplification³ 18S ribosomal RNA gene (amplicon ASA.S1)	~ 450 base pair amplicon	~ 450 base pair amplicon
Genotypic Analysis Sequencing of 18S ribosomal RNA gene (~ 410 base pairs)	Consistent with <i>Acanthamoeba</i> sp.	Consistent with <i>Acanthamoeba</i> sp.
OD₂₆₀/OD₂₈₀ Ratio	1.6 to 2.1	2.0
Inactivation of Source Culture 10% of vial contents in Peptone Yeast Glucose (PYG) medium ⁴	No viable organisms detected	No viable organisms detected

¹NR-46511 was produced from a culture of BEI Resources NR-33654 lot 60732089. Genomic DNA was extracted using proprietary technology.

²The volume per vial was slightly over specification for this lot.

³PCR amplification was performed using the JDP1 and JDP2 primer set as described [Schroeder, J. M., et al. "Use of Subgenomic 18S Ribosomal DNA PCR and Sequencing for Genus and Genotype Identification of *Acanthamoebae* from Humans with Keratitis and from Sewage Sludge." *J. Clin. Microbiol.* 39 (2001): 1903-1911. PubMed: 11326011].

⁴Incubated in PYG medium (ATCC[®] medium 712) for 7 days at 25°C in an aerobic atmosphere

Date: 02 APR 2015

Signature:



Title:

Technical Manager, BEI Authentication or designee

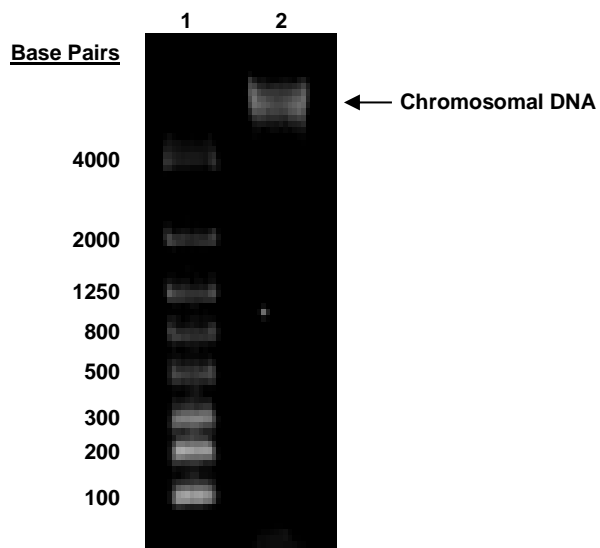
ATCC[®], on behalf of BEI Resources, hereby represents and warrants that the material provided under this certificate has been subjected to the tests and procedures specified and that the results described, along with any other data provided in this certificate, are true and accurate to the best of ATCC[®]'s knowledge.

ATCC[®] is a trademark of the American Type Culture Collection.

You are authorized to use this product for research use only. It is not intended for human use.



Figure 1



Lane 1: Lonza FlashGel™ 4 kb DNA Marker
Lane 2: 33 ng of NR-46511