

***Vibrio cholerae*, Strain HC-61A2**
Catalog No. NR-28876
Product Description: *Vibrio cholerae* (*V. cholerae*), strain HC-61A2 was deposited as a serogroup non-O1/non-O139 strain that was isolated from a patient in Haiti in 2010.

Lot¹: 63087135
Manufacturing Date: 19DEC2014

TEST	SPECIFICATIONS	RESULTS
Phenotypic Analysis Cellular morphology ² Colony morphology ² Hemolysis ³ Motility (wet mount) VITEK [®] MS (MALDI-TOF)	Gram-negative rods Report results Report results Report results Consistent with <i>V. cholerae</i>	Gram-negative rods Circular, flat, entire, smooth and translucent (Figure 1) α-hemolytic Motile Consistent with <i>V. cholerae</i>
Genotypic Analysis Sequencing of 16S ribosomal RNA gene (~ 1490 base pairs)	Consistent with <i>V. cholerae</i>	Consistent with <i>V. cholerae</i> ^{4,5}
Purity (post-freeze)⁶	Growth consistent with <i>V. cholerae</i>	Growth consistent with <i>V. cholerae</i>
Viability (post-freeze)²	Growth	Growth

¹The deposited material was inoculated into Tryptic Soy broth and grown 24 hours at 37°C in an aerobic atmosphere. Broth inoculum was added to Tryptic Soy agar with 5% defibrinated sheep blood kolles and grown 23 hours under propagation conditions, and the resulting subculture was vialled and frozen. NR-28876 was produced by inoculation of the frozen subculture into Marine broth and grown 24 hours under propagation conditions. Broth inoculum was added to Marine agar kolles, which were grown 17 hours under propagation conditions to produce this lot.

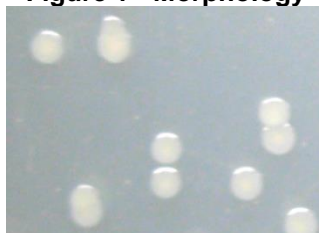
²22 hours on Marine agar under propagation conditions

³24 hours on Tryptic Soy agar with 5% defibrinated sheep blood under propagation conditions

⁴100% identical to *V. cholerae*, strain HC-61A2 (GenBank: AJRU01000001.1)

⁵Also consistent with other *Vibrio* species

⁶Purity of this lot was assessed for 7 days on Tryptic Soy agar with 5% defibrinated sheep blood under propagation conditions.

Figure 1 - Morphology

Date: 21 MAY 2015
Signature:
BEI Resources Authentication

ATCC[®], on behalf of BEI Resources, hereby represents and warrants that the material provided under this certificate has been subjected to the tests and procedures specified and that the results described, along with any other data provided in this certificate, are true and accurate to the best of ATCC[®]'s knowledge.

ATCC[®] is a trademark of the American Type Culture Collection.

You are authorized to use this product for research use only. It is not intended for human use.


BEI Resources
www.beiresources.org

E-mail: contact@beiresources.org

Tel: 800-359-7370

Fax: 703-365-2898