

***Aspergillus fumigatus*, Strain B5854**

**Catalog No. NR-35302**

**Product Description:** *Aspergillus fumigatus* (*A. fumigatus*), strain B5854, was obtained in 1998 from human peritoneal fluid in California, USA.

**Lot<sup>1</sup>: 63007448**

**Manufacturing Date: 18APR2014**

TEST	SPECIFICATIONS	RESULTS
<b>Phenotypic Analysis</b> Colony morphology <sup>2</sup> Surface, reverse  Conidial morphology <sup>2</sup> Conidia, conidiophore	Report results  Report results	White to blue to green, hirsute, filiform; tan; (Figure 1A)  Green, globose and smooth; hyaline (Figure 1B)
<b>Genotypic Analysis</b> Sequencing of internal transcribed spacer (ITS) 1, 5.8S ribosomal RNA (rRNA) gene, and ITS 2 (~ 560 base pairs) Sequencing of 28S rRNA gene (partial) (~ 540 base pairs)	Consistent with <i>A. fumigatus</i>  Consistent with <i>A. fumigatus</i>	Consistent with <i>A. fumigatus</i> <sup>3</sup>  Consistent with <i>A. fumigatus</i> <sup>4</sup>
<b>Purity<sup>5</sup></b> Modified Sabouraud Dextrose agar at 25°C Nutrient broth with 0.1% Yeast Extract at 25°C Nutrient broth with 0.1% Yeast Extract at 37°C	No bacterial growth No bacterial growth No bacterial growth	No bacterial growth No bacterial growth No bacterial growth
<b>Viability (post-freeze)<sup>2</sup></b>	Growth	Growth

<sup>1</sup>NR-35302 was produced by growth of the deposited material on Modified Sabouraud Dextrose agar in an aerobic atmosphere at 25°C for 7 days.

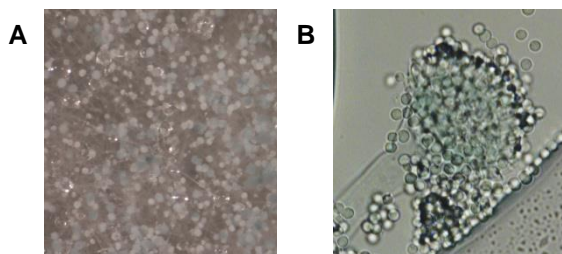
<sup>2</sup>7 days at 25°C in an aerobic atmosphere on Modified Sabouraud Dextrose agar

<sup>3</sup>99.8% identical to *A. fumigatus*, type strain ATCC® 1022™ (GenBank: HQ026746.1)

<sup>4</sup>100% identical to *A. fumigatus*, type strain ATCC® 1022™ (GenBank: AY660917.1)

<sup>5</sup>Clarity of broth was determined by visual inspection after 26 days at 25°C and 37°C in an aerobic atmosphere.

**Figure 1 – Colony and Conidial Morphology**



**Date:** 17 APR 2015

**Signature:** 

BEI Resources Authentication

ATCC®, on behalf of BEI Resources, hereby represents and warrants that the material provided under this certificate has been subjected to the tests and procedures specified and that the results described, along with any other data provided in this certificate, are true and accurate to the best of ATCC®'s knowledge.

ATCC® is a trademark of the American Type Culture Collection.

You are authorized to use this product for research use only. It is not intended for human use.

