

**Peptoclostridium difficile, Strain CD169**

**Catalog No. NR-43503**

**Product Description:** *Peptoclostridium difficile* (*P. difficile*; also referred to as *Clostridium difficile*), strain CD169 is a non-toxicogenic strain isolated in March 2010 from the stool of an asymptomatic patient in Ann Arbor, Michigan, USA.

**Lot<sup>1</sup>: 62910820**

**Manufacturing Date: 13OCT2014**

TEST	SPECIFICATIONS	RESULTS
<b>Phenotypic Analysis</b> Cellular morphology Colony morphology <sup>2</sup>  Hemolysis <sup>2</sup> Motility (wet mount) Biochemical tests: Esculin hydrolysis Gelatin hydrolysis VITEK <sup>®</sup> MS (MALDI-TOF)	Gram-positive rods Report results  Report results Report results  Positive Positive Consistent with <i>P. difficile</i>	Gram-positive rods Irregular, flat, undulate, rough and gray (Figure 1) Non-hemolytic Motile  Positive Positive Consistent with <i>P. difficile</i>
<b>Genotypic Analysis</b> Sequencing of 16S ribosomal RNA gene (~ 1450 base pairs)	Consistent with <i>P. difficile</i>	Consistent with <i>P. difficile</i> <sup>3</sup>
<b>Purity (post-freeze)</b> Anaerobic growth <sup>4</sup> Aerobic growth <sup>5</sup>	Growth consistent with <i>P. difficile</i> No growth	Growth consistent with <i>P. difficile</i> No growth
<b>Viability (post-freeze)<sup>2</sup></b>	Growth	Growth

<sup>1</sup>NR-43503 was produced by inoculation of the deposited material into Modified Reinforced Clostridial medium and incubated for 45 hours at 37°C in an anaerobic atmosphere (< 0.5% O<sub>2</sub>; Remel™ Anaero Pack-Anaero™ R681001). The material from the initial growth was passaged once in Modified Reinforced Clostridial medium for 71 hours under propagation conditions to produce this lot.

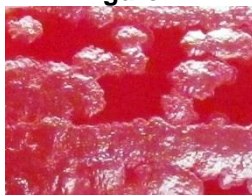
<sup>2</sup>3 days on Tryptic Soy agar with 5% defibrinated sheep blood under propagation conditions

<sup>3</sup>≥ 99.7% identical to GenBank: AVHZ01000003.1 (*P. difficile*, strain CD169)

<sup>4</sup>Purity of this lot was assessed for 10 days on Tryptic Soy agar with 5% defibrinated sheep blood under propagation conditions.

<sup>5</sup>Purity of this lot was assessed for 10 days on Tryptic Soy agar with 5% defibrinated sheep blood in an aerobic atmosphere with 5% CO<sub>2</sub>.

**Figure 1**



**Date:** 04 JUN 2015

**Signature:**

BEI Resources Authentication

ATCC<sup>®</sup>, on behalf of BEI Resources, hereby represents and warrants that the material provided under this certificate has been subjected to the tests and procedures specified and that the results described, along with any other data provided in this certificate, are true and accurate to the best of ATCC<sup>®</sup>'s knowledge.

ATCC<sup>®</sup> is a trademark of the American Type Culture Collection. You are authorized to use this product for research use only. It is not intended for human use.

