

Genomic DNA from *Escherichia coli*, Strain UMN 026 (BAA-1161)

Catalog No. NR-3055

Product Description: Genomic DNA was isolated from a preparation of extraintestinal pathogenic *Escherichia coli* (ExPEC) strain UMN 026 (BAA-1161), serotype O17:K52:H18. The bacterial preparation was produced by propagation of BEI Resources NR-712.

Lot¹: 7642448

Manufacturing Date: 22SEP2006

| TEST | SPECIFICATIONS | RESULTS |
|-----------------------------------------------------------------------------------------------------------------------------------------------------------------|------------------------------------------------------------------------------|------------------------------------------------------------------------------|
| Sequencing of 16S Ribosomal RNA Gene (~ 500 bp) | Identical to BEI Resources NR-712 Consistent with <i>Escherichia coli</i> | Identical to BEI Resources NR-712 Consistent with <i>Escherichia coli</i> |
| Agarose Gel Electrophoresis | High molecular weight chromosomal DNA | High molecular weight chromosomal DNA (Figure 1) |
| Concentration by PicoGreen [®] Measurement | 4 to 6 µg in 25 to 100 µL per vial | 5.6 µg in 44 µL per vial (126 µg/mL) |
| Functional Activity by PCR Amplification 16S ribosomal RNA gene Virulence markers on chromosome ² <i>stx1</i> <i>stx2</i> <i>eaeA</i> | ~ 1500 bp amplicon Negative Negative Negative | ~ 1500 bp amplicon Negative Negative Negative |
| OD ₂₆₀ /OD ₂₈₀ Ratio | 1.7 to 1.9 | 1.9 |
| Bacterial Inactivation 10% of total yield plated on Trypticase Soy Agar ^{3,4} | No viable bacteria detected | No viable bacteria detected |

¹The bacterial preparation used for extraction of genomic DNA was produced by inoculation of BEI Resources NR-712 (Lot: 4131709) onto Tryptic Soy Agar. After incubation for 24 hours at 37°C, genomic DNA was extracted using proprietary technology.

²Kimata, K., et al. "Rapid Categorization of Pathogenic *Escherichia coli* by Multiplex PCR." *Microbiol. Immunol.* 49 (2005): 485–492. PubMed: 15965295.

³Incubated for 7 days at 37°C and aerobic atmosphere with 5% CO₂.

⁴An extraction procedure was used that has been shown to consistently inactivate 100% of Gram-negative bacteria.

Date: 07 MAY 2007

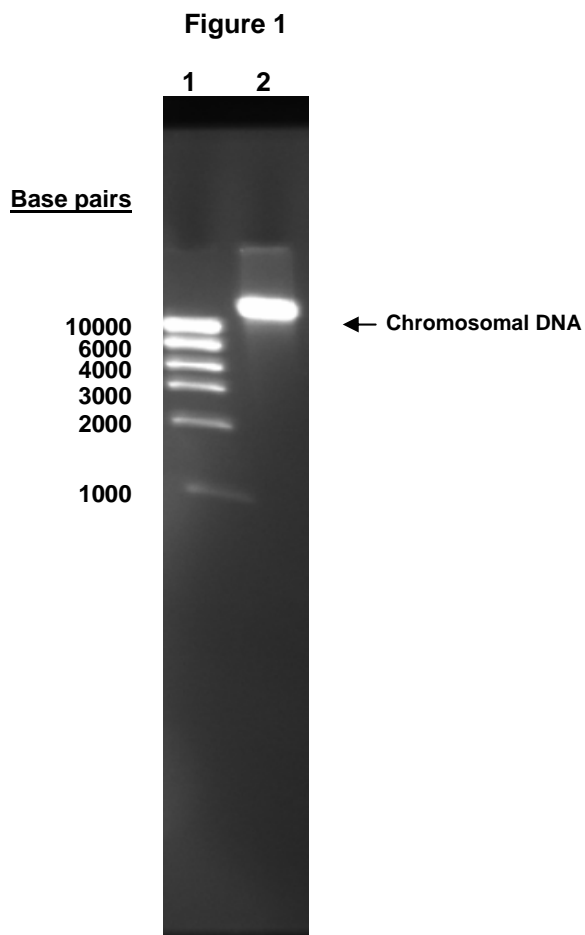
Signature: Signature on File

Title: Technical Manager, BEI Authentication or designee

ATCC[®], on behalf of BEI Resources, hereby represents and warrants that the material provided under this certificate has been subjected to the tests and procedures specified and that the results described, along with any other data provided in this certificate, are true and accurate to the best of ATCC[®]'s knowledge.

ATCC[®] is a trademark of the American Type Culture Collection.

You are authorized to use this product for research use only. It is not intended for human use.



Lane 1: Invitrogen™ High DNA Mass Ladder
Lane 2: 200 ng of NR-3055