

**Staphylococcus aureus, Strain RN0153**

**Catalog No. NR-45932**

**Product Description:** *Staphylococcus aureus* (*S. aureus*), strain RN0153 is a derivative strain of NCTC8325 (RN1, NRS77) and contains the plasmid pC221, which confers resistance to chloramphenicol. *S. aureus*, strain RN0153 is a methicillin-sensitive *S. aureus* (MSSA) strain.

**Lot<sup>1</sup>: 63397516**

**Manufacturing Date: 25MAR2015**

TEST	SPECIFICATIONS	RESULTS
<b>Phenotypic Analysis</b> Cellular morphology Colony morphology <sup>2</sup>  Motility (wet mount) Hemolysis <sup>2</sup> Biochemical characterization Catalase Coagulase <sup>3</sup> VITEK <sup>®</sup> 2 Compact (GP card)	Gram-positive cocci Report results  Report results Report results  Positive Report results Consistent with <i>S. aureus</i>	Gram-positive cocci Circular, convex, entire, smooth and gray (Figure 1) Non-motile β-hemolytic  Positive Negative Consistent with <i>S. aureus</i>
<b>Antibiotic Susceptibility Profile</b> VITEK <sup>®</sup> (AST-GP71 card) <sup>4</sup> Beta-lactamase <sup>5</sup> Cefoxitin screen Benzylpenicillin Oxacillin Gentamicin Ciprofloxacin Levofloxacin Moxifloxacin Clindamycin (inducible resistance) Erythromycin Clindamycin Quinupristin/dalfopristin Linezolid Daptomycin Vancomycin Minocycline Tetracycline Tigecycline Nitrofurantoin Rifampicin Trimethoprim/sulfamethoxazole Etest <sup>®</sup> antibiotic test strips <sup>6</sup> Chloramphenicol <sup>7</sup> Teicoplanin <sup>7</sup>	Report results Report results Report results Sensitive Sensitive Sensitive Sensitive Report results Report results Report results Sensitive Sensitive Sensitive Sensitive Report results Sensitive Report results Report results Report results Report results Report results Sensitive Sensitive Sensitive	Negative Negative Sensitive (= 0.03 µg/mL) Sensitive (≤ 0.25 µg/mL) Sensitive (≤ 0.5 µg/mL) Sensitive (≤ 0.5 µg/mL) Sensitive (≤ 0.12 µg/mL) Sensitive (≤ 0.25 µg/mL) Negative Sensitive (= 0.5 µg/mL) Sensitive (≤ 0.25 µg/mL) Sensitive (≤ 0.25 µg/mL) Sensitive (= 4 µg/mL) Sensitive (= 0.5 µg/mL) Sensitive (≤ 1 µg/mL) Sensitive (≤ 0.5 µg/mL) Sensitive (≤ 1 µg/mL) Sensitive (≤ 0.12 µg/mL) Sensitive (≤ 16 µg/mL) Sensitive (≤ 0.5 µg/mL) Sensitive (≤ 10 µg/mL)  Resistant (= 48 µg/mL) Sensitive (= 3-4 µg/mL)
<b>Genotypic Analysis</b> Sequencing of 16S ribosomal RNA gene (~ 1470 base pairs)	Consistent with <i>S. aureus</i>	Consistent with <i>S. aureus</i>
<b>Purity (post-freeze)<sup>8</sup></b>	Growth consistent with <i>S. aureus</i>	Growth consistent with <i>S. aureus</i>
<b>Viability (post-freeze)<sup>2</sup></b>	Growth	Growth

<sup>1</sup>*S. aureus*, strain RN0153 was deposited to BEI Resources as part of the NARSA collection. NR-45932 was produced by inoculation of the deposited material into Tryptic Soy broth and grown 24 hours at 37°C in an aerobic atmosphere. Broth inoculum was added to Tryptic Soy agar with 5% defibrinated sheep blood kolles which were grown 24 hours at 37°C in an aerobic atmosphere to produce this lot. Purity of this lot was assessed for 7 days under propagation conditions.

<sup>2</sup>22 hours at 37°C in an aerobic atmosphere on Tryptic Soy agar with 5% defibrinated sheep blood

<sup>3</sup>4 hours at 37°C in rabbit serum with 0.15% EDTA (Coagulase Plasma BBL™ 240827)

<sup>4</sup>Minimum Inhibitory Concentration (MIC); MIC Interpretation Guideline: CLSI M100-S22 (2012)

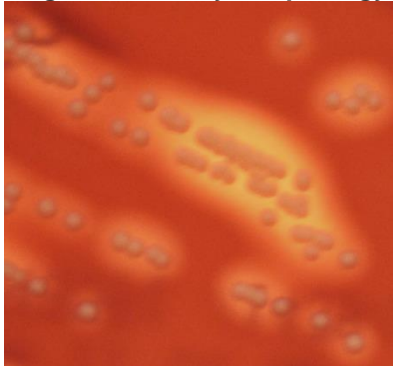
<sup>5</sup>The production of beta-lactamase was detected using a Cefinase™ Paper Disc (BBL™ 231650).

<sup>6</sup>24 hours at 37°C in an aerobic atmosphere on Mueller Hinton agar

<sup>7</sup>For both chloramphenicol (bioMérieux Etest® 412308) and teicoplanin (bioMérieux Etest® 412459), a MIC ≤ 8 µg/mL is sensitive, a MIC = 16 µg/mL is intermediate and a MIC ≥ 32 µg/mL is resistant.

<sup>8</sup>Purity of this lot was assessed for 7 days at 37°C in an aerobic atmosphere on Tryptic Soy agar with 5% defibrinated sheep blood.

Figure 1: Colony Morphology



Date: 07 AUG 2015

Signature:

BEI Resources Authentication

ATCC®, on behalf of BEI Resources, hereby represents and warrants that the material provided under this certificate has been subjected to the tests and procedures specified and that the results described, along with any other data provided in this certificate, are true and accurate to the best of ATCC®'s knowledge.

ATCC® is a trademark of the American Type Culture Collection.

You are authorized to use this product for research use only. It is not intended for human use.

