

Certificate of Analysis for HM-885

***Streptococcus* sp., Strain CM7**

Catalog No. HM-885

Product Description: *Streptococcus* sp., strain CM7 is a human oral cavity isolate.

Lot^{1,2}: 63529430

Manufacturing Date: 02JUL2015

TEST	SPECIFICATIONS	RESULTS
Phenotypic Analysis Cellular morphology Colony morphology ³ Hemolysis ^{3,4} Motility (wet mount)	Gram-positive cocci Report results Repost results Report results	Gram-positive cocci Circular, raised, entire, smooth and gray (Figure 1) Colony type 1: α-hemolytic Colony type 2: Non-hemolytic Non-motile
Genotypic Analysis Sequencing of 16S ribosomal RNA gene (~ 1500 base pairs)	≥ 99% identical to GenBank: JATP01000009.1 (<i>Streptococcus</i> sp., strain CM7)	≥ 99% identical to GenBank: JATP01000009.1 (<i>Streptococcus</i> sp., strain CM7)
Purity (post-freeze)⁵	Consistent with <i>Streptococcus</i> sp.	Consistent with <i>Streptococcus</i> sp.
Viability (post-freeze)³	Growth	Growth

¹Quality control of HMP material is only performed to demonstrate that the material distributed by BEI Resources is identical to the deposited material. It should not be considered a complete characterization of the deposited organism.

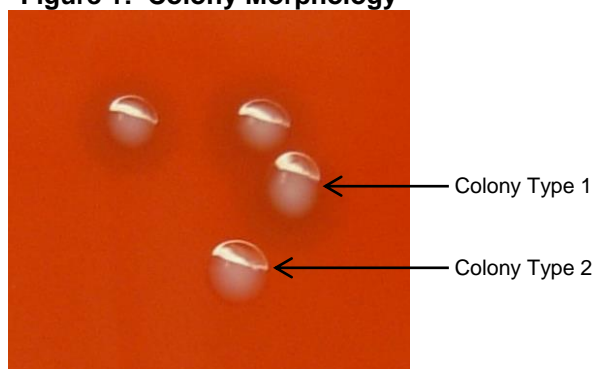
²*Streptococcus* sp., strain CM7 was deposited by Maria V. Sizova, Ph.D., Department of Biology, Northeastern University, Boston, Massachusetts, USA. The deposited material was inoculated into Tryptic Soy broth and incubated for 2 days at 37°C in an aerobic atmosphere with 5% CO₂. The material from the initial growth was passaged once in Tryptic Soy broth for 1 day under propagation conditions to produce this lot.

³1 day on Tryptic Soy agar with 5% defibrinated sheep blood at 37°C in an aerobic atmosphere with 5% CO₂

⁴Two colony types were observed when grown under propagation conditions and did not revert to the mixed colony type. The 16S ribosomal RNA gene of each colony type was sequenced and found to be 100% identical to the other colony type and to GenBank: JATP01000009.1 (*Streptococcus* sp., strain CM7)

⁵Purity of this lot was assessed for 7 days on Tryptic Soy agar with 5% defibrinated sheep blood at 37°C in an aerobic atmosphere with 5% CO₂.

Figure 1: Colony Morphology



Certificate of Analysis for HM-885

Date: 26 AUG 2015

Signature:



BEI Resources Authentication

ATCC®, on behalf of BEI Resources, hereby represents and warrants that the material provided under this certificate has been subjected to the tests and procedures specified and that the results described, along with any other data provided in this certificate, are true and accurate to the best of ATCC®'s knowledge.

ATCC® is a trademark of the American Type Culture Collection.

You are authorized to use this product for research use only. It is not intended for human use.

