

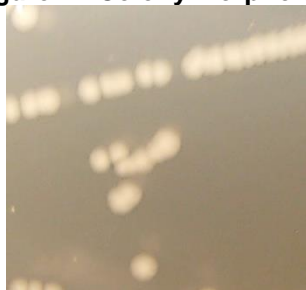
***Streptococcus agalactiae*, Strain SGBS014**
**Catalog No. NR-44134**
**Product Description:** *Streptococcus agalactiae* (*S. agalactiae*), strain SGBS014 was isolated in 2002 from the blood of a bacteremia patient in Harris County, Texas, USA.

**Lot<sup>1</sup>: 63527621**
**Manufacturing Date: 03JUN2015**

TEST	SPECIFICATIONS	RESULTS
<b>Phenotypic Analysis</b> Cellular morphology Colony morphology <sup>2</sup>  Hemolysis on blood agar <sup>3</sup> Motility (wet mount) Biochemical tests: VITEK <sup>®</sup> MS (MALDI-TOF) Catalase	Gram-positive cocci Report results  Report results Report results  Consistent with <i>S. agalactiae</i> Negative	Gram-positive cocci Circular, low convex, entire, smooth and cream (Figure 1) β-hemolytic Non-motile  Consistent with <i>S. agalactiae</i> Negative
<b>Genotypic Analysis</b> Sequencing of 16S ribosomal RNA gene (~ 930 base pairs)	Consistent with <i>S. agalactiae</i>	Consistent with <i>S. agalactiae</i> <sup>4,5</sup>
<b>Purity (post-freeze)<sup>6</sup></b>	Growth consistent with <i>S. agalactiae</i>	Growth consistent with <i>S. agalactiae</i>
<b>Viability (post-freeze)<sup>2</sup></b>	Growth	Growth

<sup>1</sup>NR-44134 was produced by inoculation of the deposited material into Tryptic Soy broth and incubated for 1 day at 37°C in an aerobic atmosphere with 5% CO<sub>2</sub>. Broth inoculum was added to Tryptic Soy agar kolles which were grown for 1 day under propagation conditions to produce this lot.

<sup>2</sup>Grown for 1 day on Tryptic Soy agar at 37°C in an aerobic atmosphere with 5% CO<sub>2</sub>
<sup>3</sup>Grown for 1 day on Tryptic Soy agar with 5% defibrinated sheep blood at 37°C in an aerobic atmosphere with 5% CO<sub>2</sub>
<sup>4</sup>100% sequence identity to *S. agalactiae*, strain SGBS014 (GenBank: AUVY01000026.1)

<sup>5</sup>Also consistent with *Streptococcus difficilis*
<sup>6</sup>Purity of this lot was assessed for 7 days on Tryptic Soy agar at 37°C in an aerobic atmosphere with 5% CO<sub>2</sub>
**Figure 1: Colony Morphology**

**Date: 08 OCT 2015**
**Signature:**
**BEI Resources Authentication**

ATCC<sup>®</sup>, on behalf of BEI Resources, hereby represents and warrants that the material provided under this certificate has been subjected to the tests and procedures specified and that the results described, along with any other data provided in this certificate, are true and accurate to the best of ATCC<sup>®</sup>'s knowledge.

ATCC<sup>®</sup> is a trademark of the American Type Culture Collection.

You are authorized to use this product for research use only. It is not intended for human use.

