

Sporothrix globosa, Isolate 4

Catalog No. NR-41305

Product Description: *Sporothrix globosa* (*S. globosa*), isolate 4 was obtained from human skin tissue in China in May 2011.

Lot¹: 61697590

Manufacturing Date: 30MAY2013

TEST	SPECIFICATIONS	RESULTS
Phenotypic Analysis Morphology ² Raffinose assimilation ³	Report results Negative	Tear-shaped to clavate with white to brown to gray pigmentation, undifferentiated hyphae (Figure 1) Negative
Genotypic Analysis Partial sequencing of 28S ribosomal RNA (rRNA) gene (~ 580 base pairs) Sequencing of beta-tubulin gene (~ 370 base pairs)	Consistent with <i>S. globosa</i> Consistent with <i>S. globosa</i>	Consistent with <i>S. globosa</i> ⁴ Consistent with <i>S. globosa</i> ⁵
Purity⁶ Potato Dextrose agar at 25°C Nutrient broth with 0.1% Yeast Extract at 25°C Nutrient broth with 0.1% Yeast Extract at 37°C	No bacterial growth No bacterial growth No bacterial growth	No bacterial growth No bacterial growth No bacterial growth
Viability (post-freeze)²	Growth	Growth

¹NR-41305 was produced by growth of the deposited material on Yeast Mold agar in an aerobic atmosphere at 25°C. An inoculum from the plate was added to Yeast Mold broth and grown 7 days at 25°C in an aerobic atmosphere to produce this lot.

²3 days at 25°C in an aerobic atmosphere on Potato Dextrose agar

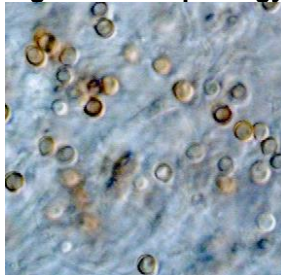
³5 days at 25°C in an aerobic atmosphere. Nocardia Purple broth with raffinose differentiates *S. globosa* from *S. schenckii* based on the ability of *S. schenckii* isolates to utilize raffinose as a sole carbon source, resulting in a yellow color. *S. globosa* isolates will remain purple. [Marimon, R., et al. "Sporothrix basiliensis, *S. globosa*, and *S. mexicana*, Three New *Sporothrix* Species of Clinical Interest." *J. Clin. Microbiol.* 45 (2007): 3198-3206. PubMed: 17687013.]. Positive control tube (ATCC[®] 20282™) was yellow.

⁴100% identical to *S. globosa*, strain ATCC[®] MYA-4911™ (GenBank: KC294289.1, initially deposited as *S. schenckii* but was reclassified as *S. globosa*), type strain sequence is not available, also consistent with *S. schenckii*

⁵99.4% identical to *S. globosa*, strain CBS 129724 (GenBank: KC113238.1), type strain sequence is not available, also consistent with *S. schenckii*

⁶Clarity of broth and lack of growth on agar was determined by visual inspection after 3 days at 25°C and 37°C in an aerobic atmosphere.

Figure 1: Morphology



Date: 14 DEC 2015

Signature: 
BEI Resources Authentication

ATCC[®], on behalf of BEI Resources, hereby represents and warrants that the material provided under this certificate has been subjected to the tests and procedures specified and that the results described, along with any other data provided in this certificate, are true and accurate to the best of ATCC[®]'s knowledge.

ATCC[®] is a trademark of the American Type Culture Collection.

You are authorized to use this product for research use only. It is not intended for human use.

