

**Sporothrix globosa, Isolate 1**

**Catalog No. NR-41302**

**Product Description:** *Sporothrix globosa* (*S. globosa*), isolate 1 was obtained from human skin tissue in China in May 2008.

**Lot<sup>1</sup>: 61697586**

**Manufacturing Date: 30MAY2013**

TEST	SPECIFICATIONS	RESULTS
<b>Phenotypic Analysis</b> Morphology <sup>2</sup>	Report results	Ovoid with dark brown pigmentation, undifferentiated hyphae (Figure 1)
Raffinose assimilation <sup>3</sup>	Negative	Negative
<b>Genotypic Analysis</b> Partial sequencing of internal transcribed spacer (ITS) 1, 5.8S ribosomal RNA (rRNA) gene, and ITS 2 (~ 500 base pairs)	Consistent with <i>S. globosa</i>	Consistent with <i>S. globosa</i> <sup>4</sup>
Sequencing of beta-tubulin gene (~ 380 base pairs)	Consistent with <i>S. globosa</i>	Consistent with <i>S. globosa</i> <sup>5</sup>
<b>Purity<sup>6</sup></b> Potato Dextrose agar at 25°C Nutrient broth with 0.1% Yeast Extract at 25°C Nutrient broth with 0.1% Yeast Extract at 37°C	No bacterial growth No bacterial growth No bacterial growth	No bacterial growth No bacterial growth No bacterial growth
<b>Viability (post-freeze)<sup>2</sup></b>	Growth	Growth

<sup>1</sup>NR-41302 was produced by growth of the deposited material on Yeast Mold agar in an aerobic atmosphere at 25°C. An inoculum from the plate was added to Yeast Mold broth and grown 7 days at 25°C in an aerobic atmosphere to produce this lot.

<sup>2</sup>3 days at 25°C in an aerobic atmosphere on Potato Dextrose agar

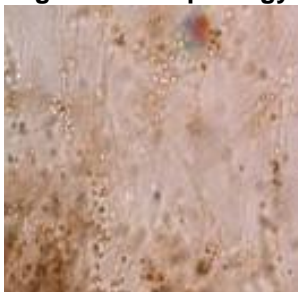
<sup>3</sup>5 days at 25°C in an aerobic atmosphere. Nocardia Purple broth with raffinose differentiates *S. globosa* from *S. schenckii* based on the ability of *S. schenckii* isolates to utilize raffinose as a sole carbon source, resulting in a yellow color. *S. globosa* isolates will remain purple. [Marimon, R., et al. "Sporothrix basiliensis, *S. globosa*, and *S. mexicana*, Three New *Sporothrix* Species of Clinical Interest." *J. Clin. Microbiol.* 45 (2007): 3198-3206. PubMed: 17687013.]. Positive control tube (ATCC® 20282™) was yellow.

<sup>4</sup>100% identical to *S. globosa*, type strain CBS 120340 (GenBank: KP017084.1)

<sup>5</sup>99.2% identical to *S. globosa*, strain CBS 129724 (GenBank: KC113238.1), type strain sequence is not available, also consistent with *S. schenckii*

<sup>6</sup>Clarity of broth and lack of growth on agar was determined by visual inspection after 3 days at 25°C and 37°C in an aerobic atmosphere.

**Figure 1: Morphology**



**Date:** 14 DEC 2015

**Signature:**

BEI Resources Authentication

ATCC®, on behalf of BEI Resources, hereby represents and warrants that the material provided under this certificate has been subjected to the tests and procedures specified and that the results described, along with any other data provided in this certificate, are true and accurate to the best of ATCC®'s knowledge.

ATCC® is a trademark of the American Type Culture Collection.

You are authorized to use this product for research use only. It is not intended for human use.

