

HC-04, Hepatocyte (human)

Catalog No. MRA-975

Product Description: Hepatocyte cell line HC-04 was derived from normal human liver cells and is known to support *Plasmodium falciparum* (*P. falciparum*) and *P. vivax* liver stage development.

Lot¹: 63750640

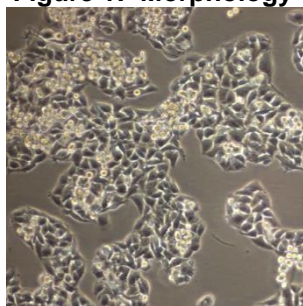
Manufacturing Date: 15OCT2015

TEST	SPECIFICATIONS	RESULTS
Growth Properties	Adherent monolayer	Adherent monolayer
Morphology	Polygonal with granular cytoplasm	Polygonal with granular cytoplasm (Figure 1)
Cell Count	$\geq 1.0 \times 10^6$ cells per vial	5.4×10^6 cells per vial
Post-Freeze Viability	$\geq 75\%$	87.6%
Sterility (21-day incubation) Harpo's HTYE broth ² , 37°C and 26°C, aerobic Tryptic Soy broth, 37°C and 26°C, aerobic Sabouraud Dextrose broth, 37°C and 26°C, aerobic DMEM with 10% FBS, 37°C, aerobic Sheep blood agar, 37°C, aerobic Sheep blood agar, 37°C, anaerobic Thioglycollate broth, 37°C, anaerobic	No growth No growth No growth No growth No growth No growth No growth	No growth No growth No growth No growth No growth No growth No growth
Mycoplasma Contamination DNA Detection by PCR of Test Article nucleic acid	None detected	None detected

¹MRA-975 was produced by cultivation of the deposited material in complete culture medium (CCM) at 37°C in sealed flasks for 17 days, after which the cells reached 80% confluency and were harvested. Every 24 to 72 hours, media was replaced with fresh CCM. Cells were reseeded on day 5 (1:5 split), day 10 (1:4 split), day 12 (1:5 split) and day 13 (1:2 split).

²Atlas, Ronald M. *Handbook of Microbiological Media*. 3rd ed. Ed. Lawrence C. Parks. Boca Raton: CRC Press, 2004, p. 798.

Figure 1: Morphology



Date: 11 JAN 2016

Signature:

BEI Resources Authentication

ATCC®, on behalf of BEI Resources, hereby represents and warrants that the material provided under this certificate has been subjected to the tests and procedures specified and that the results described, along with any other data provided in this certificate, are true and accurate to the best of ATCC®'s knowledge.

ATCC® is a trademark of the American Type Culture Collection.

You are authorized to use this product for research use only. It is not intended for human use.

