

***Clostridium difficile*, Isolate 20120015**

**Catalog No. NR-49284**

**Product Description:** *Clostridium difficile* (*C. difficile*; also referred to as *Peptoclostridium difficile*), isolate 20120015 was obtained from the stool of an elderly male patient with a community-associated (CA) *C. difficile* infection in New York, USA, in 2011. Isolate 20120015 was deposited as PCR ribotype 027, North American pulsed-field gel electrophoresis type 1 (NAP1), containing *tcdA*, *tcdB* and *tcdC* (with 18 base pair deletion) of the PaLoc operon as well as the *C. difficile* binary toxin (CDT).

**Lot<sup>1</sup>: 63719789**

**Manufacturing Date: 10SEP2015**

TEST	SPECIFICATIONS	RESULTS
<b>Phenotypic Analysis</b> Cellular morphology Colony morphology <sup>2</sup>  Hemolysis <sup>2</sup> Motility (wet mount) Biochemical tests: Esculin hydrolysis <sup>3</sup> Gelatin hydrolysis <sup>3</sup> VITEK <sup>®</sup> MS (MALDI-TOF)	Gram-positive rods Report results  Report results Report results  Positive Positive Consistent with <i>C. difficile</i>	Gram-positive rods Irregular, slight peaked, undulate, opaque, rough and gray (Figure 1) Non-hemolytic Motile  Positive Positive Consistent with <i>C. difficile</i>
<b>Genotypic Analysis</b> Sequencing of 16S ribosomal RNA gene (~ 1400 base pairs)	Consistent with <i>C. difficile</i>	Consistent with <i>C. difficile</i>
<b>PCR Assay of Extracted DNA</b> Presence of <i>C. difficile</i> -specific genes <sup>4</sup> Triose phosphate isomerase ( <i>tpi</i> ) Presence of toxin genes <sup>4,5</sup> <i>cdtB</i> <i>tcdA</i> (wild type) <i>tcdA</i> (partial deletion) <i>tcdB</i>	~ 230 base pair amplicon  ~ 510 base pair amplicon ~ 370 base pair amplicon No amplicon ~ 160 base pair amplicon	~ 230 base pair amplicon  ~ 510 base pair amplicon ~ 370 base pair amplicon No amplicon ~ 160 base pair amplicon
<b>Purity (post-freeze)</b> Anaerobic growth <sup>6</sup>  Aerobic growth <sup>7</sup>	Growth consistent with expected colony morphology No growth	Growth consistent with expected colony morphology No growth
<b>Viability (post-freeze)<sup>2</sup></b>	Growth	Growth

<sup>1</sup>NR-49284 was produced by inoculation of the deposited material into Modified Reinforced Clostridial medium and incubated for 1 day at 37°C in an anaerobic atmosphere (< 0.5% O<sub>2</sub>; Remel™ Anaero Pack-Anaero™ R681001). The material from the initial growth was passaged in Modified Reinforced Clostridial medium for 1 day at 37°C in an anaerobic atmosphere to produce this lot.

<sup>2</sup>1 day at 37°C in an anaerobic atmosphere on Tryptic Soy agar with 5% defibrinated sheep blood

<sup>3</sup>Tests were assessed after 7 days at 37°C in an anaerobic atmosphere. The gelatin tube was placed at 4°C for one hour prior to result determination.

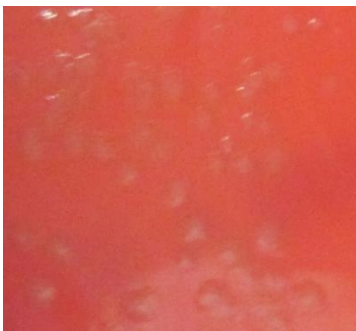
<sup>4</sup>Lemee, L., et al. "Multiplex PCR Targeting *tpi* (Triose Phosphate Isomerase), *tcdA* (Toxin A), and *tcdB* (Toxin B) Genes for Toxigenic Culture of *Clostridium difficile*." *J. Clin. Microbiol.* 42 (2004): 5710-5714. PubMed: 15583303.

<sup>5</sup>Antikainen, J., et al. "Detection of Virulence Genes of *Clostridium difficile* by Multiplex PCR." *APMIS*. 117 (2009): 607-613. PubMed: 19664132.

<sup>6</sup>Purity of this lot was assessed for 10 days at 37°C in an anaerobic atmosphere on Tryptic Soy agar with 5% defibrinated sheep blood.

<sup>7</sup>Purity of this lot was assessed for 10 days at 37°C in an aerobic atmosphere with 5% CO<sub>2</sub> on Tryptic Soy agar with 5% defibrinated sheep blood.

Figure 1: Colony Morphology



Date: 13 JAN 2016

Signature:

A handwritten signature in black ink, appearing to read "David C. Anderson".

BEI Resources Authentication

ATCC<sup>®</sup>, on behalf of BEI Resources, hereby represents and warrants that the material provided under this certificate has been subjected to the tests and procedures specified and that the results described, along with any other data provided in this certificate, are true and accurate to the best of ATCC<sup>®</sup>'s knowledge.

ATCC<sup>®</sup> is a trademark of the American Type Culture Collection.

You are authorized to use this product for research use only. It is not intended for human use.

