

Weissella cibaria, Strain F16_1

Catalog No. HM-1200

Product Description: *Weissella cibaria* (*W. cibaria*), strain F16_1 was isolated from human stool in Guelph, Ontario, Canada. **Note:** The strain designation, strain F16 #1, on the vial label for lot 63980304 is incorrect. The correct strain designation is F16_1.

Lot^{1,2}: 63980304

Manufacturing Date: 07JAN2016

TEST	SPECIFICATIONS	RESULTS
Phenotypic Analysis Cellular morphology Colony morphology ³ Motility (wet mount)	Gram-positive rods Report results Report results	Gram-positive rods Circular, low convex, entire, smooth and white (Figure 1) Non-motile
Genotypic Analysis Sequencing of 16S ribosomal RNA gene (~ 1520 base pairs)	≥ 99% sequence identity to depositor's sequence	≥ 99% sequence identity to depositor's sequence
Purity (post-freeze)⁴	Growth consistent with expected colony morphology	Growth consistent with expected colony morphology
Viability (post-freeze)³	Growth	Growth

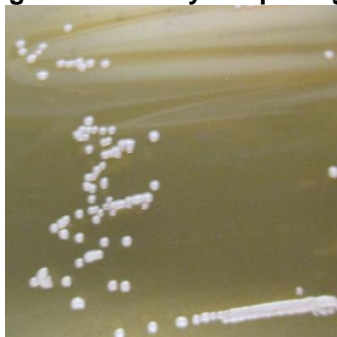
¹Quality control of HMP material is only performed to demonstrate that the material distributed by BEI Resources is identical to the deposited material. It should not be considered a complete characterization of the deposited organism.

²*W. cibaria*, strain F16_1 was deposited by Emma Allen-Vercoe, Assistant Professor, Department of Molecular and Cellular Biology, University of Guelph, Guelph, Ontario, Canada. The deposited material was inoculated into Lactobacilli MRS broth and incubated for 1 day at 30°C in an aerobic atmosphere. Broth inoculum was added to Lactobacilli MRS agar kolles which were grown for 1 day at 30°C in an aerobic atmosphere to produce this lot.

³1 day at 30°C in an aerobic atmosphere on Lactobacilli MRS agar

⁴Purity of this lot was assessed for 7 days at 30°C in an aerobic atmosphere on Tryptic Soy agar with 5% defibrinated sheep blood.

Figure 1: Colony Morphology



Certificate of Analysis for HM-1200

Date: 09 FEB 2016

Signature: 

BEI Resources Authentication

ATCC[®], on behalf of BEI Resources, hereby represents and warrants that the material provided under this certificate has been subjected to the tests and procedures specified and that the results described, along with any other data provided in this certificate, are true and accurate to the best of ATCC[®]'s knowledge.

ATCC[®] is a trademark of the American Type Culture Collection.

You are authorized to use this product for research use only. It is not intended for human use.

