

Klebsiella pneumoniae, Strain CHS 67

Catalog No. NR-48569

Product Description: *Klebsiella pneumoniae* (*K. pneumoniae*), strain CHS 67 was isolated in 2013 from the blood and/or urine of a non-ICU adult human patient in North Carolina, USA. *K. pneumoniae*, strain CHS 67 was deposited as a carbapenem resistant strain and is part of a Carbapenem Resistant Enterobacteriaceae (CRE) Sequencing Project at the Broad Institute. Strain CHS 67 was also deposited as resistant to meropenem and ceftazidime, intermediately susceptible to amikacin and susceptible to tigecycline.

Lot¹: 63885489

Manufacturing Date: 20NOV2015

TEST	SPECIFICATIONS	RESULTS
Phenotypic Analysis Cellular morphology Colony morphology ² Motility (wet mount) VITEK [®] MS (MALDI-TOF) VITEK [®] 2 Compact (GN card)	Gram-negative rods Report results Report results <i>K. pneumoniae</i> ≥ 90% probability of being <i>K. pneumoniae</i>	Gram-negative rods Circular, convex, entire, smooth, mucoid, opaque and cream (Figure 1) Non-motile <i>K. pneumoniae</i> (99.9%) <i>K. pneumoniae</i> (95% probability) ³
Antibiotic Susceptibility Profile VITEK [®] (AST-GN69) ⁴ ESBL ^{5,6} Ampicillin Amoxicillin/Clavulanic Acid Ampicillin/Sulbactam Piperacillin/Tazobactam Cefazolin Ceftazidime Ceftriaxone Cefepime Ertapenem Imipenem Gentamicin Tobramycin Ciprofloxacin Levofloxacin Nitrofurantoin Trimethoprim/Sulfamethoxazole	Report results Resistant Report results Resistant Report results Resistant Resistant Resistant Resistant Report results Resistant Resistant Report results Resistant Report results Resistant Resistant Report results Resistant	Negative Resistant (≥ 32 µg/mL) Resistant (≥ 32 µg/mL) Resistant (≥ 32 µg/mL) Resistant (≥ 128 µg/mL) Resistant (≥ 64 µg/mL) Resistant (≥ 64 µg/mL) Resistant (≥ 64 µg/mL) Sensitive (= 8 µg/mL) ⁷ Resistant (≥ 8 µg/mL) Resistant (= 8 µg/mL) ⁸ Resistant (≥ 16 µg/mL) ⁸ Resistant (≥ 16 µg/mL) Resistant (≥ 4 µg/mL) Resistant (≥ 8 µg/mL) Resistant (≥ 512 µg/mL) Resistant (≥ 320 µg/mL)
Genotypic Analysis Sequencing of 16S ribosomal RNA gene (~ 1480 base pairs)	≥ 99% sequence identity to <i>K. pneumoniae</i> type strain	99.3% sequence identity to Y17656 ^{9,10}
Purity (post-freeze) ¹¹	Consistent with <i>K. pneumoniae</i>	Consistent with <i>K. pneumoniae</i>
Viability (post-freeze) ²	Growth	Growth

¹NR-48569 was produced by inoculation of the deposited material into Tryptic Soy broth and grown for 1 day at 37°C in an aerobic atmosphere. Broth inoculum was added to Tryptic Soy agar kolles, which were grown for 1 day at 37°C in an aerobic atmosphere to produce this lot.

²1 day on Tryptic Soy agar at 37°C in an aerobic atmosphere

³Percent probabilities above 90% indicate a close match to the typical biochemical pattern for the given organism, with a percent probability of 99% being a perfect match between the test reaction pattern and the unique biochemical pattern of the given organism or organism group. For additional information, please refer to O'Hara, C.M. and J. M. Miller. "Evaluation of the Vitek 2 ID-GNB Assay for Identification of Members of

the Family *Enterobacteriaceae* and Other Nonenteric Gram-Negative Bacilli and Comparison with the Vitek GNI+ Card." *J. Clin. Microbiol.* 41 (2003): 2096-2101. PubMed: 12734254.

⁴Minimum Inhibitory Concentration (MIC); MIC Interpretation Guideline: CLSI M100-S22 (2012)

⁵The VITEK[®] 2 ESBL Test is a confirmatory test for Extended-Spectrum Beta-Lactamases (ESBLs) inhibited by clavulanic acid and utilizes cefepime, cefotaxime and ceftazidime, with and without clavulanic acid, to determine a positive or negative result.

⁶A negative ESBL test does not rule out the presence of an ESBL as there are many types of ESBL that may not be covered with this card. Furthermore, the ESBL phenotype may be masked by an AmpC β -lactamase. For more information, refer to Gniadkowski, M. "Evolution and Epidemiology of Extended-Spectrum β -Lactamases (ESBLs) and ESBL-Producing Microorganisms." *Clin. Microbiol. Infect.* 7 (2001): 597-608. PubMed: 11737084.

⁷*K. pneumoniae*, strain CHS 67 was deposited as resistant to cefepime. Antibiotic susceptibility testing performed in duplicate determined cefepime MIC for *K. pneumoniae*, strain CHS 67 as 8 μ g/mL, which is considered sensitive. Because this isolate is not a confirmed an ESBL-producer, CLSI recommendations are not to modify the interpretation based on the susceptibilities of other antibiotics in the same class. However, while this strain appears sensitive *in vitro*, there is a possibility that it is resistant *in vivo*.

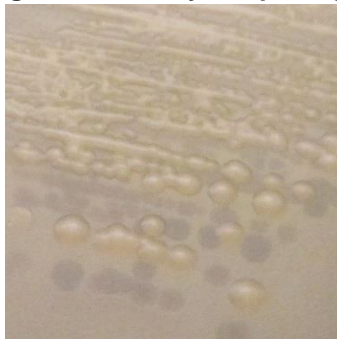
⁸*K. pneumoniae*, strain CHS 67 was deposited as intermediately susceptible to gentamicin. Antibiotic susceptibility testing performed in duplicate determined gentamicin MIC for *K. pneumoniae*, strain CHS 67 as 16 μ g/mL, which is considered as resistant to gentamicin.

⁹Also consistent with other *Klebsiella* species

¹⁰99.3% identical to *K. pneumoniae*, strain CHS 67 (GenBank: JMYM01000014.1)

¹¹Purity of this lot was assessed for 7 days on Tryptic Soy agar at 37°C in an aerobic atmosphere.

Figure 1: Colony Morphology



Date: 24 FEB 2016

Signature:

BEI Resources Authentication

ATCC[®], on behalf of BEI Resources, hereby represents and warrants that the material provided under this certificate has been subjected to the tests and procedures specified and that the results described, along with any other data provided in this certificate, are true and accurate to the best of ATCC[®]'s knowledge.

ATCC[®] is a trademark of the American Type Culture Collection.

You are authorized to use this product for research use only. It is not intended for human use.

