

**Capnocytophaga sputigena, Strain CC21\_001D**

**Catalog No. HM-1037**

**Product Description:** *Capnocytophaga sputigena* (*C. sputigena*), strain CC21\_001D was isolated in October 2010 from colonic biopsy tissue of a human subject in Victoria, British Columbia, Canada.

**Lot<sup>1,2</sup>: 63885521**

**Manufacturing Date: 11DEC2015**

TEST	SPECIFICATIONS	RESULTS
<b>Phenotypic Analysis</b> Cellular morphology Colony morphology <sup>3</sup> Motility (wet mount)	Gram-negative rods Report results Report results	Gram-negative rods Punctiform (Figure 1) Motile
<b>Genotypic Analysis</b> Sequencing of 16S ribosomal RNA gene (~ 1410 base pairs)	≥ 99% identical to depositor's sequence	≥ 99% identical to depositor's sequence
<b>Purity (post-freeze)</b> Anaerobic growth <sup>4</sup>  Aerobic growth <sup>5</sup>	Consistent with expected colony morphology No growth	Consistent with expected colony morphology No growth
<b>Viability (post-freeze)<sup>3</sup></b>	Growth	Growth

<sup>1</sup>Quality control of HMP material is only performed to demonstrate that the material distributed by BEI Resources is identical to the deposited material. It should not be considered a complete characterization of the deposited organism.

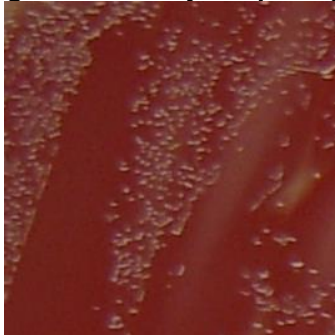
<sup>2</sup>*C. sputigena* strain CC21\_001D was deposited by Professor Emma Allen-Vercoe, Department of Molecular and Cellular Biology, University of Guelph, Guelph, Ontario, Canada. The deposited material was inoculated into Modified Chopped Meat medium and incubated for 2 days at 37°C in an anaerobic atmosphere (< 5% O<sub>2</sub>; Remel™ Pack-Anaero™). The material from the initial growth was passaged in Modified Chopped Meat medium for 2 days at 37°C in an anaerobic atmosphere to produce this lot.

<sup>3</sup>2 days at 37°C in an anaerobic atmosphere on Tryptic Soy agar with 5% defibrinated sheep blood

<sup>4</sup>Purity of this lot was assessed for 7 days at 37°C in an anaerobic atmosphere on Tryptic Soy agar with 5% defibrinated sheep blood.

<sup>5</sup>Purity of this lot was assessed for 7 days at 37°C in an aerobic atmosphere with 5% CO<sub>2</sub> on Tryptic Soy agar with 5% defibrinated sheep blood.

**Figure 1: Colony Morphology**



## Certificate of Analysis for HM-1037

**Date:** 15 MAR 2016

**Signature:**



BEI Resources Authentication

ATCC<sup>®</sup>, on behalf of BEI Resources, hereby represents and warrants that the material provided under this certificate has been subjected to the tests and procedures specified and that the results described, along with any other data provided in this certificate, are true and accurate to the best of ATCC<sup>®</sup>'s knowledge.

ATCC<sup>®</sup> is a trademark of the American Type Culture Collection.

You are authorized to use this product for research use only. It is not intended for human use.

