

Genomic DNA from *Ehrlichia chaffeensis*, Strain Liberty

Catalog No. NR-50091

This reagent is the property of the U.S. Government

Product Description: Genomic DNA was isolated from a preparation of cell lysate and supernatant from *Canis familiaris* macrophage-monocyte cells¹ infected with *Ehrlichia chaffeensis* (*E. chaffeensis*), strain Liberty.

Lot²: 63958929

Manufacturing Date: 13JAN2016

TEST	SPECIFICATIONS	RESULTS
Sequencing of Species-Specific Region (882 nucleotides)	Consistent with <i>E. chaffeensis</i> , strain Liberty Consistent with NR-46446	100% identity with <i>E. chaffeensis</i> , strain Liberty (GenBank: CP007476) Consistent with NR-46446
Functional Activity by RT-PCR Amplification³	~ 1000 bp amplicon	~ 1000 bp amplicon (Figure 1)
Total DNA Content by PicoGreen[®] Measurement (Bacterial and Cellular)	Report results	4.5 ng per 100 µL
Bacterial Inactivation 10% of total yield inoculated on DH82 cells ¹ and evaluated by IFA ^{4,5}	No viable bacteria detected	No viable bacteria detected

¹DH82 cells: ATCC[®] CRL-10389™

²Nucleic acid was extracted from a preparation of *E. chaffeensis*, strain Liberty (BEI Resources NR-46446, Lot 62795201), using a QIAamp[®] Viral RNA Mini Kit (Qiagen 52906).

³Amplified using iTaq[™] Universal SYBR[®] Green One-Step Kit (Bio-Rad 172-5151) with 5 µL of NR-50091 in a 40 µL reaction

⁴Using *Ehrlichia chaffeensis* IFA IgG reagent kit (Fuller Laboratories ECHG-120)

⁵Use of the QIAamp[®] Viral RNA Mini Kit has been demonstrated to consistently inactivate 100% of *E. chaffeensis*.

Date: 19 APR 2016

Signature: 

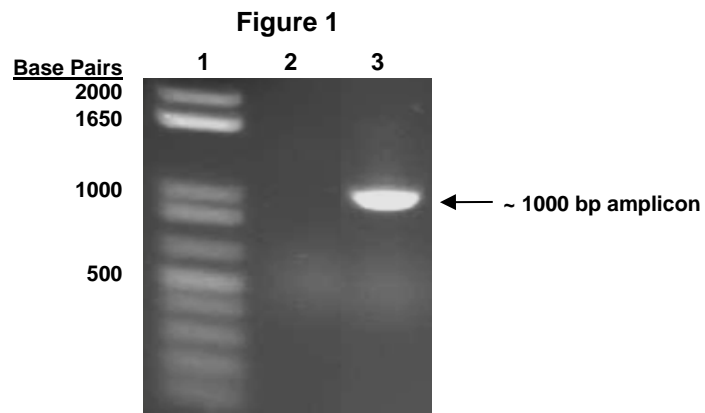
BEI Resources Authentication

ATCC[®], on behalf of BEI Resources, hereby represents and warrants that the material provided under this certificate has been subjected to the tests and procedures specified and that the results described, along with any other data provided in this certificate, are true and accurate to the best of ATCC[®]'s knowledge.

ATCC[®] is a trademark of the American Type Culture Collection.

You are authorized to use this product for research use only. It is not intended for human use.





Lane 1: Invitrogen™ TrackIt™ 1 Kb Plus DNA Ladder
Lane 2: Negative control
Lane 3: NR-50091