

***Bartonella quintana*, Strain JK-7**

Catalog No. NR-44416

Product Description: *Bartonella quintana* (*B. quintana*), strain JK-7 was isolated in July 1991 from the bone of an AIDS patient in San Francisco, California, USA, who presented with bacillary angiomatosis of the bone.

Lot¹: 63950632

Manufacturing Date: 22MAR2016

TEST	SPECIFICATIONS	RESULTS
Phenotypic Analysis Cellular morphology Colony morphology ² Motility (wet mount) Biochemical tests: Catalase Oxidase	Gram-negative rod Report results Report results Negative Negative	Gram-negative rod Circular, low convex, entire, smooth, opaque and gray (Figure 1) Motile Negative Negative
Genotypic Analysis Sequencing of 16S ribosomal RNA gene (~ 870 base pairs)	≥ 99% sequence identity to <i>B. quintana</i> , strain JK-7 (GenBank: AZZZ01000001.1)	99.9% sequence identity to <i>B. quintana</i> , strain JK-7 (GenBank: AZZZ01000001.1) ³
Purity (post-freeze)⁴	Consistent with expected colony morphology	Consistent with expected colony morphology
Viability (post-freeze)²	Growth	Growth

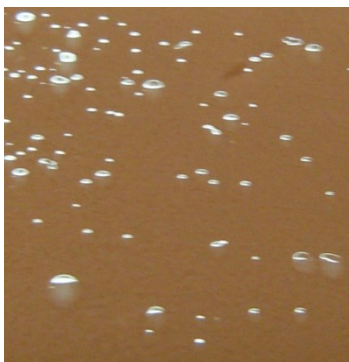
¹NR-44416 was produced by inoculation of the deposited material into Brain Heart Infusion broth and grown for 11 days at 35°C in an aerobic atmosphere with 5% CO₂. Broth inoculum was added to Chocolate agar kolles, which were grown for 7 days at 35°C in an aerobic atmosphere with 5% CO₂ to produce this lot.

²7 days on Chocolate agar at 37°C in an aerobic atmosphere with 5% CO₂

³Also consistent with other *Bartonella* species

⁴Purity of this lot was assessed for 7 days on Tryptic Soy with 5% defibrinated sheep blood agar at 37°C in an aerobic atmosphere with 5% CO₂.

Figure 1: Colony Morphology



Date: 04 MAY 2016

Signature: 

BEI Resources Authentication

ATCC®, on behalf of BEI Resources, hereby represents and warrants that the material provided under this certificate has been subjected to the tests and procedures specified and that the results described, along with any other data provided in this certificate, are true and accurate to the best of ATCC®'s knowledge.

ATCC® is a trademark of the American Type Culture Collection.

You are authorized to use this product for research use only. It is not intended for human use.

