

## Certificate of Analysis for MRA-1238G

**Genomic DNA from *Plasmodium falciparum*, Strain IPC 4884**

**Catalog No. MRA-1238G**

**Product Description:** Genomic DNA was extracted from a preparation of *Plasmodium falciparum* (*P. falciparum*), strain IPC 4884.

**Lot<sup>1</sup>: 62401474**

**Manufacturing Date: 24APR2014**

TEST	SPECIFICATIONS	RESULTS
<b>Sequencing of Merozoite Surface Protein 2 (MSP2) gene (~ 690 base pairs)</b>	Consistent with <i>P. falciparum</i>	Consistent with <i>P. falciparum</i>
<b>Agarose Gel Electrophoresis</b>	High molecular weight chromosomal DNA	High molecular weight chromosomal DNA (Figure 1)
<b>Concentration by NanoDrop™ Measurement</b>	Report results	10 µg/mL
<b>Amount</b>	Report results	~ 500 ng per vial
<b>Functional Activity by PCR Amplification</b> MSP2 locus <sup>2</sup>	~ 600-900 base pair amplicon	~ 900 base pair amplicon
<b>OD<sub>260</sub>/OD<sub>280</sub> Ratio</b>	1.6 to 2.1	2.1
<b>Protozoan Inactivation</b> Human erythrocytes exposed to 10% of total yield of MRA-1238G <sup>3</sup>	No parasitemia observed	No parasitemia observed
<b>Mycoplasma Contamination</b> DNA Detection by PCR	None detected	None detected

<sup>1</sup>MRA-1238G was produced from a cell culture of the deposited material. Genomic DNA was extracted using proprietary technology.

<sup>2</sup>Primer sequences and conditions for PCR are available upon request.

<sup>3</sup>15 days in complete RPMI culture medium at 37°C in sealed flasks outgassed with blood-gas atmosphere (90% N<sub>2</sub>, 5% CO<sub>2</sub>, 5% O<sub>2</sub>). Complete RPMI culture medium was changed and parasitemia checked every 1 to 4 days.

**Date:** 19 MAY 2016

**Signature:**

BEI Resources Authentication

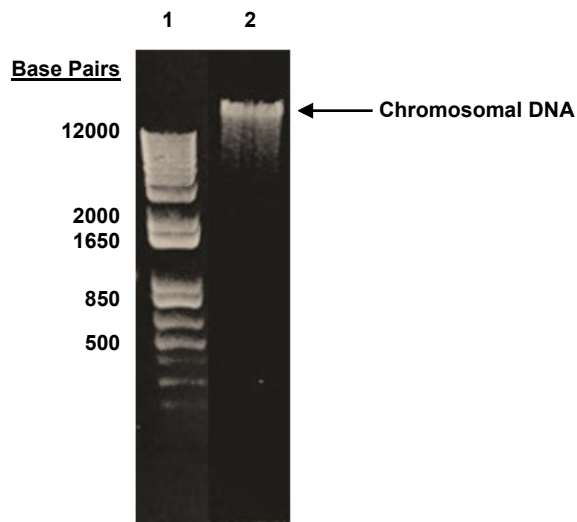
ATCC®, on behalf of BEI Resources, hereby represents and warrants that the material provided under this certificate has been subjected to the tests and procedures specified and that the results described, along with any other data provided in this certificate, are true and accurate to the best of ATCC®'s knowledge.

ATCC® is a trademark of the American Type Culture Collection.

You are authorized to use this product for research use only. It is not intended for human use.



Figure 1: Agarose Gel Electrophoresis



Lane 1: Invitrogen™ 1 Kb Plus DNA Ladder  
Lane 2: ~ 479 ng of MRA-1238G