

***Plesiomonas* sp., Strain HPP0020**

Catalog No. HM-791

Product Description: *Plesiomonas* sp., strain HPP0020 was isolated from a biopsy of ileo-anal pouch mucosa of a human subject in the United States.

Lot^{1,2}: 62072080

Manufacturing Date: 07NOV2013

TEST	SPECIFICATIONS	RESULTS
Phenotypic Analysis Cellular morphology Colony morphology ³ Motility (wet mount)	Gram-negative rods Report results Report results	Gram-negative rods Circular, low convex, entire, translucent, smooth and gray (Figure 1) Motile
Genotypic Analysis Sequencing of 16S ribosomal RNA gene (~ 1460 base pairs)	≥ 99% sequence identity to depositor's sequence	≥ 99% sequence identity to depositor's sequence
Purity (post-freeze)⁴	Consistent with expected colony morphology	Consistent with expected colony morphology
Viability (post-freeze)³	Growth	Growth

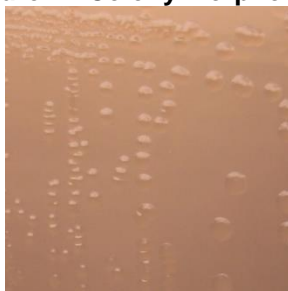
¹Quality control of HMP material is only performed to demonstrate that the material distributed by BEI Resources is identical to the deposited material. It should not be considered a complete characterization of the deposited organism.

²*Plesiomonas* sp., strain HPP0020 was deposited by Thomas M. Schmidt, Professor, Department of Microbiology and Molecular Genetics, Michigan State University, East Lansing, Michigan, USA. HM-791 was produced by inoculation of the deposited material into Nutrient broth. Broth inoculum was added to Nutrient agar and incubated for 27 hours at 37°C in an aerobic atmosphere with 5% CO₂. Colonies were then suspended in Nutrient broth and used to inoculate Nutrient agar kolles which were grown for 24 hours at 37°C in an aerobic atmosphere with 5% CO₂ to produce this lot.

³24 hours at 37°C in an aerobic atmosphere with 5% CO₂ on Nutrient agar

⁴Purity of this lot was assessed for 7 days at 37°C in an aerobic atmosphere with 5% CO₂ on Nutrient agar.

Figure 1: Colony Morphology



Date: 01 JUN 2016

Signature:

BEI Resources Authentication

ATCC®, on behalf of BEI Resources, hereby represents and warrants that the material provided under this certificate has been subjected to the tests and procedures specified and that the results described, along with any other data provided in this certificate, are true and accurate to the best of ATCC®'s knowledge.

ATCC® is a trademark of the American Type Culture Collection.

You are authorized to use this product for research use only. It is not intended for human use.

