

Genomic DNA from *Plasmodium falciparum*, Strain IPC 5188

Catalog No. MRA-1239G

Product Description: Genomic DNA was extracted from a preparation of *Plasmodium falciparum* (*P. falciparum*), strain IPC 5188.

Lot¹: 62401476

Manufacturing Date: 04APR2014

TEST	SPECIFICATIONS	RESULTS
Sequencing of Merozoite Surface Protein 2 (MSP2) gene (~ 640 base pairs)	Consistent with <i>P. falciparum</i>	Consistent with <i>P. falciparum</i>
Agarose Gel Electrophoresis	High molecular weight chromosomal DNA	High molecular weight chromosomal DNA (Figure 1)
Concentration by NanoDrop™ Measurement	Report results	10 µg/mL
Amount	Report results	~ 500 ng per vial
Functional Activity by PCR Amplification MSP2 locus ²	~ 600-900 base pair amplicon	~ 900 base pair amplicon
OD₂₆₀/OD₂₈₀ Ratio	1.6 to 2.1	1.9
Protozoan Inactivation Human erythrocytes exposed to 10% of total yield of MRA-1239G ³	No parasitemia observed	No parasitemia observed
Mycoplasma Contamination DNA Detection by PCR	None detected	None detected

¹MRA-1239G was produced from a cell culture of the deposited material. Genomic DNA was extracted using proprietary technology.

²Primer sequences and conditions for PCR are available upon request.

³14 days in complete RPMI culture medium at 37°C in sealed flasks outgassed with blood-gas atmosphere (90% N₂, 5% CO₂, 5% O₂). Complete RPMI culture medium was changed and parasitemia checked every 1 to 4 days.

Date: 02 JUN 2016

Signature:

BEI Resources Authentication

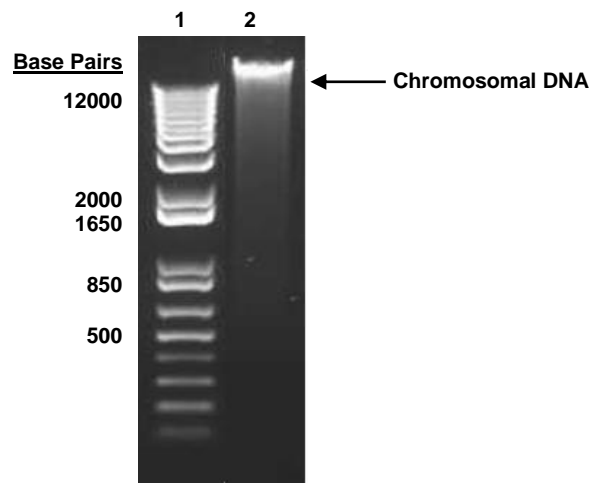
ATCC®, on behalf of BEI Resources, hereby represents and warrants that the material provided under this certificate has been subjected to the tests and procedures specified and that the results described, along with any other data provided in this certificate, are true and accurate to the best of ATCC®'s knowledge.

ATCC® is a trademark of the American Type Culture Collection.

You are authorized to use this product for research use only. It is not intended for human use.



Figure 1: Agarose Gel Electrophoresis



Lane 1: Invitrogen™ 1 Kb Plus DNA Ladder
Lane 2: ~ 612 ng of MRA-1239G