

***Bartonella henselae*, Strain JK-41R****Catalog No. NR-44419**

**Product Description:** *Bartonella henselae* (*B. henselae*), strain JK-41R was isolated in July 1993 from a lymph node of a pediatric patient with AIDS and bacillary angiomatosis in San Francisco, California, USA.

**Lot<sup>1</sup>: 63950666****Manufacturing Date: 14MAR2016**

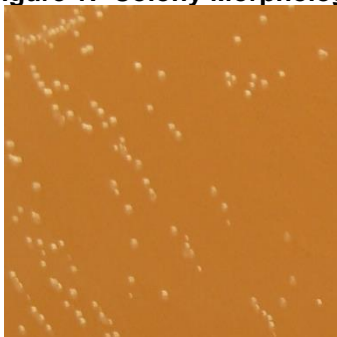
TEST	SPECIFICATIONS	RESULTS
<b>Phenotypic Analysis</b> Cellular morphology Colony morphology <sup>2</sup>  Motility (wet mount) Biochemical tests: Catalase Oxidase	Gram-negative rods Report results  Report results  Negative Negative	Gram-negative rods Circular, convex, entire, smooth and gray (Figure 1) Motile  Negative Negative
<b>Genotypic Analysis</b> Sequencing of 16S ribosomal RNA gene (~ 900 base pairs)	≥ 99% sequence identity to <i>B. henselae</i> , strain JK-41R (GenBank: AZZU01000002.1)	99.9% sequence identity to <i>B. henselae</i> , strain JK-41R (GenBank: AZZU01000002.1) <sup>3</sup>
<b>Purity (post-freeze)<sup>4</sup></b>	Growth consistent with expected colony morphology	Growth consistent with expected colony morphology
<b>Viability (post-freeze)<sup>2</sup></b>	Growth	Growth

<sup>1</sup>NR-44419 was produced by inoculation of the deposited material into Heart Infusion broth. Broth inoculum was added to Chocolate agar and grown for 6 days at 35°C in an aerobic atmosphere with 5% CO<sub>2</sub>. A loopful of colonies from the Chocolate agar growth was suspended in Heart Infusion broth and used to inoculate Chocolate agar kolles, which were grown for 7 days at 35°C in an aerobic atmosphere with 5% CO<sub>2</sub> to produce this lot.

<sup>2</sup>6 days on Chocolate agar at 37°C in an aerobic atmosphere with 5% CO<sub>2</sub>

<sup>3</sup>Also consistent with other *Bartonella* species

<sup>4</sup>Purity of this lot was assessed for 7 days at 37°C in an aerobic atmosphere with 5% CO<sub>2</sub> on Tryptic Soy agar with 5% defibrinated sheep blood.

**Figure 1: Colony Morphology**

**Date:** 14 JUN 2016

**Signature:** 

**BEI Resources Authentication**

ATCC®, on behalf of BEI Resources, hereby represents and warrants that the material provided under this certificate has been subjected to the tests and procedures specified and that the results described, along with any other data provided in this certificate, are true and accurate to the best of ATCC®'s knowledge.

ATCC® is a trademark of the American Type Culture Collection.

You are authorized to use this product for research use only. It is not intended for human use.

