

***Solobacterium moorei*, Strain CC57E**

Catalog No. HM-1059

Product Description: *Solobacterium moorei* (*S. moorei*), strain CC57E was isolated in October 2010 from colonic biopsy tissue of a human subject in Victoria, British Columbia, Canada.

Lot^{1,2}: 64216251

Manufacturing Date: 16JUN2016

TEST	SPECIFICATIONS	RESULTS
Phenotypic Analysis Cellular morphology Colony morphology ³ Motility (wet-mount)	Gram-positive rods Report results Report results	Gram-positive rods Circular, low convex, entire, smooth and gray (Figure 1) Non-motile
Genotypic Analysis Sequencing of 16S ribosomal RNA gene (~ 1460 base pairs)	≥ 99% sequence identity to depositor's sequence	≥ 99% sequence identity to depositor's sequence
Purity (post-freeze) Anaerobic growth ⁴ Aerobic growth ⁵	Growth consistent with <i>S. moorei</i> No growth	Growth consistent with <i>S. moorei</i> No growth
Viability (post-freeze)³	Growth	Growth

¹Quality control of HMP material is only performed to demonstrate that the material distributed by BEI Resources is identical to the deposited material. It should not be considered a complete characterization of the deposited organism.

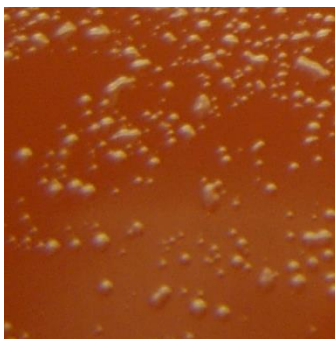
²*S. moorei*, strain CC57E was deposited by Professor Emma Allen-Vercoe, Department of Molecular and Cellular Biology, University of Guelph, Guelph, Ontario, Canada. HM-1059 was produced by inoculation of the deposited material into Modified Todd-Hewitt broth and incubated for 2 days at 37°C in an anaerobic atmosphere (< 5% O₂; Remel™ Pack-Anaero™). The material from the initial growth was passaged once in Modified Todd-Hewitt broth for 1 day at 37°C in an anaerobic atmosphere to produce this lot.

³2 days at 37°C in an anaerobic atmosphere on Eggerth-Gagnon agar

⁴Purity of this lot was assessed for 7 days on Tryptic Soy agar with 5% defibrinated sheep blood at 37°C in an anaerobic atmosphere.

⁵Purity of this lot was assessed for 7 days on Tryptic Soy agar with 5% defibrinated sheep blood at 37°C in an aerobic atmosphere with 5% CO₂.

Figure 1: Colony Morphology



Certificate of Analysis for HM-1059

Date: 19 JUL 2016

Signature:



BEI Resources Authentication

ATCC®, on behalf of BEI Resources, hereby represents and warrants that the material provided under this certificate has been subjected to the tests and procedures specified and that the results described, along with any other data provided in this certificate, are true and accurate to the best of ATCC®'s knowledge.

ATCC® is a trademark of the American Type Culture Collection.

You are authorized to use this product for research use only. It is not intended for human use.

